

# **DWR-S01D Updater**

## **Operating Instructions**

# Table of Contents

[Overview] .....	3
[Functions] .....	3
[Preparations] .....	3
[About this Software] .....	3
[Installation Procedure] .....	4
[Installation Procedure for the USB Driver] .....	8
[Installing the USB Driver from the Device Manager] .....	11
[Update Procedure] .....	16
[If Downgrade] .....	17
[Verifying Update] .....	18
[If Update Fails] .....	18
[Miscellaneous] .....	20

### [Overview]

This document serves as the operating instructions for the PC software (herein referred to as “DWR-S01D Version 1.13 Updater”) that is used to update the firmware version of the DWR-S01D.

\* The version number may vary depending on the firmware version.

### [Functions]

DWR-S01D Version 1.13 Updater\* allows you to update the firmware on the DWR-S01D to version 1.13. See the following to determine the model of your DWR-S01D.

### [Preparations]

<Acquiring the Software File>

File name: DWR-S01D\_Version\_1\_13\_Updater.zip\*

\* The version number may vary depending on the firmware version.

<Computer>

The system requirements for using this software are as follows.

OS:	Windows XP SP2 or later, Windows Vista, Windows 7
USB cable:	USB cable supplied with unit



<Record the parameters>

When the upgrade is executed for the model with V1.10 and lower, the parameters are reset to the initial setting. Before executing the software upgrade, write down the parameter setting if necessary.

### [About this Software]

- This manual and the software described herein may not be reproduced, leased or lent, in whole or in part, without prior written approval from Sony Corporation.
- Sony Corporation expressly disclaims all responsibility with respect to losses suffered by the customer or any third party as a result of use of this software.
- Sony Corporation shall provide replacement solely in the event of manufacturer defects.
- This software may not be used for purposes other than those specified.
- Design and specifications of this software are subject to change without notice.
- The source code of this software may not be modified, altered, reverse-engineered, decompiled, disassembled, or otherwise analyzed.
- Install this software and update the specified devices according to the procedures described in the operating instructions.

## DWR-S01D Updater Operating Instructions

### [Installation Procedure]

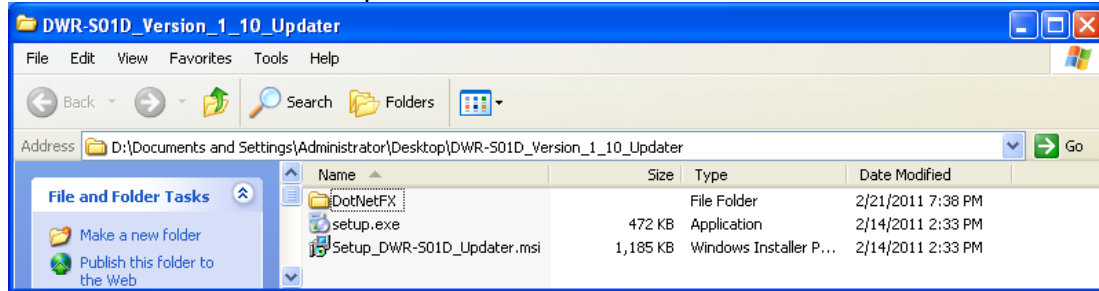
The installation procedure for DWR-S01D Version 1.13 Updater follows.

The screens used are from DWR-S01D Version 1.10 Updater.

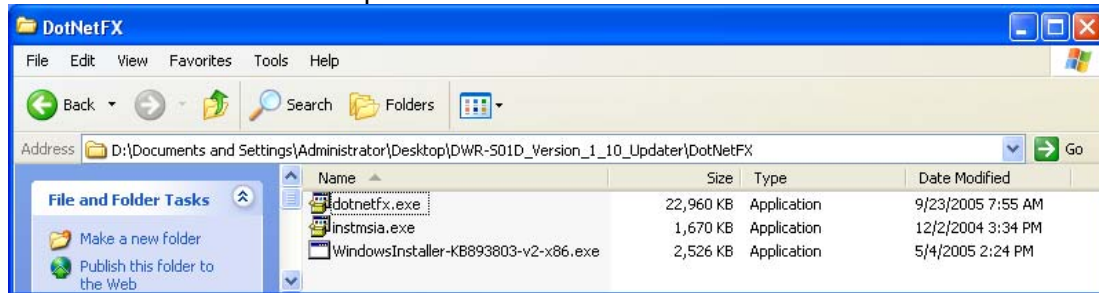
#### 1. Starting

##### 1.1. The folder configuration is as follows.

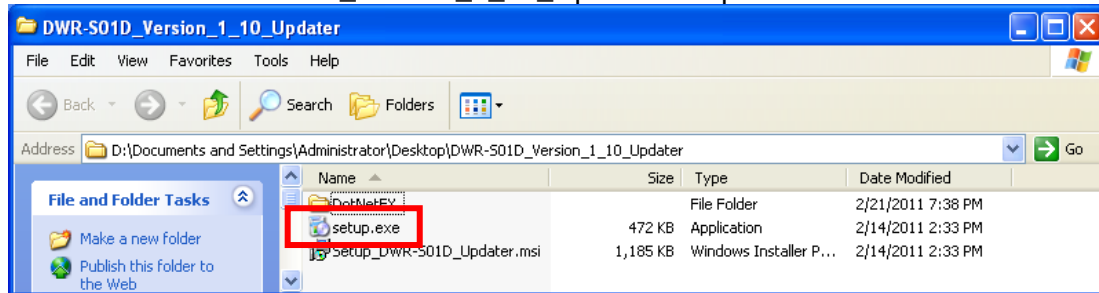
##### DWR-S01D Version 1.13 Updater



##### DWR-S01D Version 1.13 Updater \DotNetFx



##### 1.2. Double-click "DWR-S01D\_Version\_1\_03\_Updater\setup.exe."



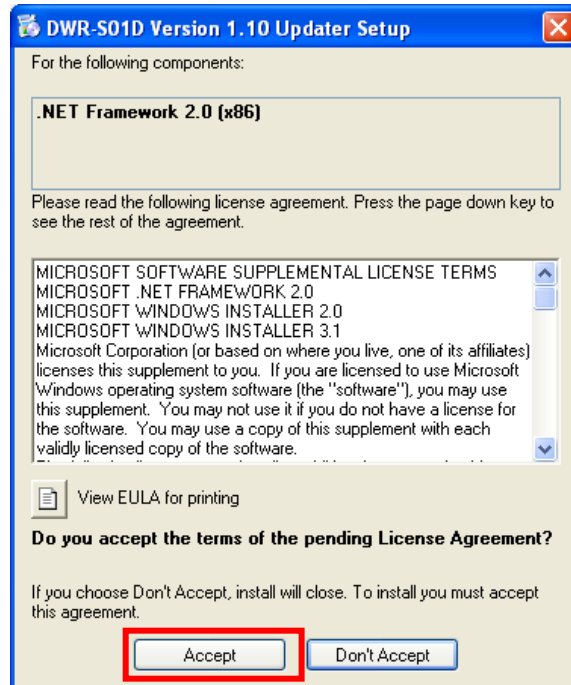
## DWR-S01D Updater Operating Instructions

1.3. After double-clicking, perform installation using the following procedure.

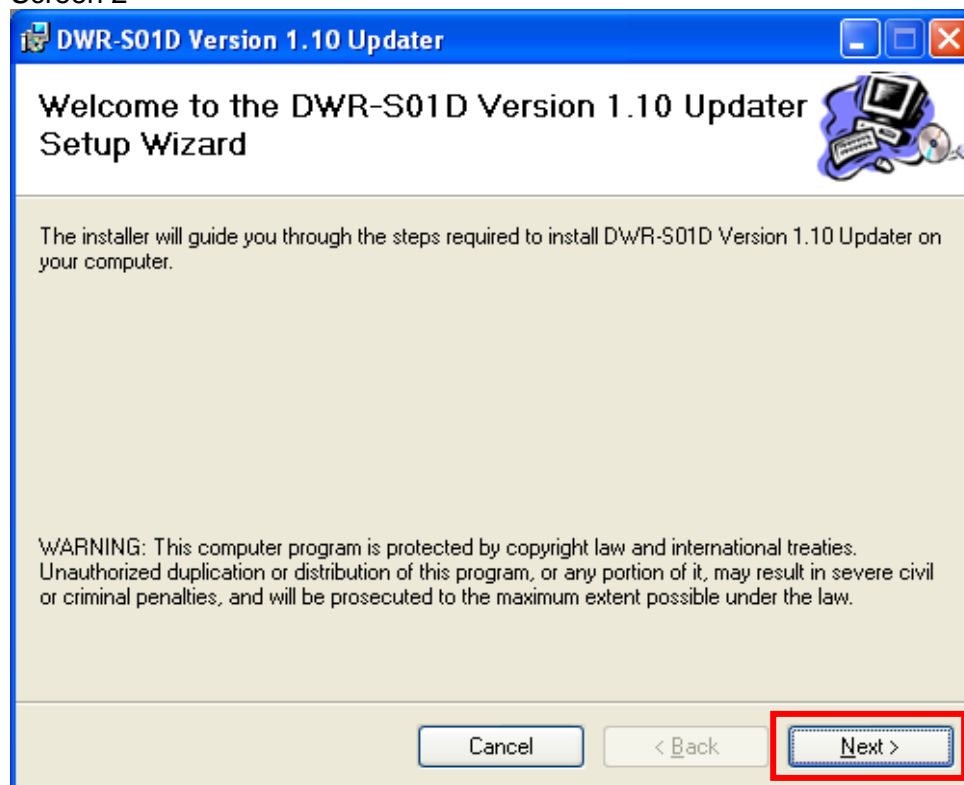
1.3.1. If screen 1 appears, click [Accept] and perform the installation procedure in “2. .net Frameworks version 2.0.”

1.3.2. If screen 2 appears, click [Next>] and perform the installation procedure in “3. DWR-S01D Version 1.13 Updater.”

Screen 1



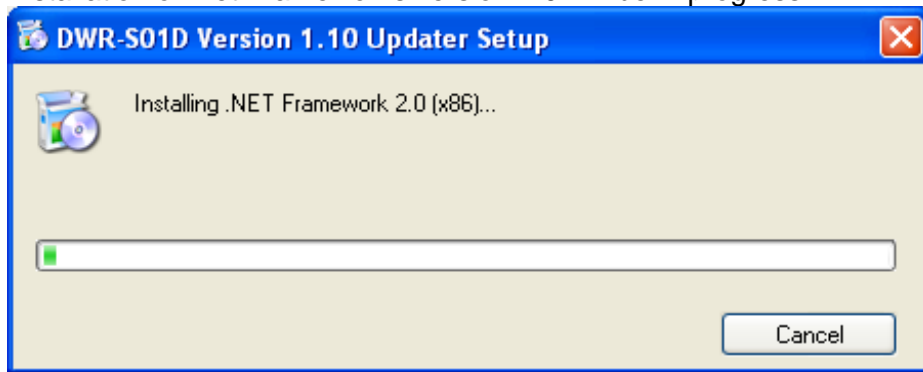
Screen 2



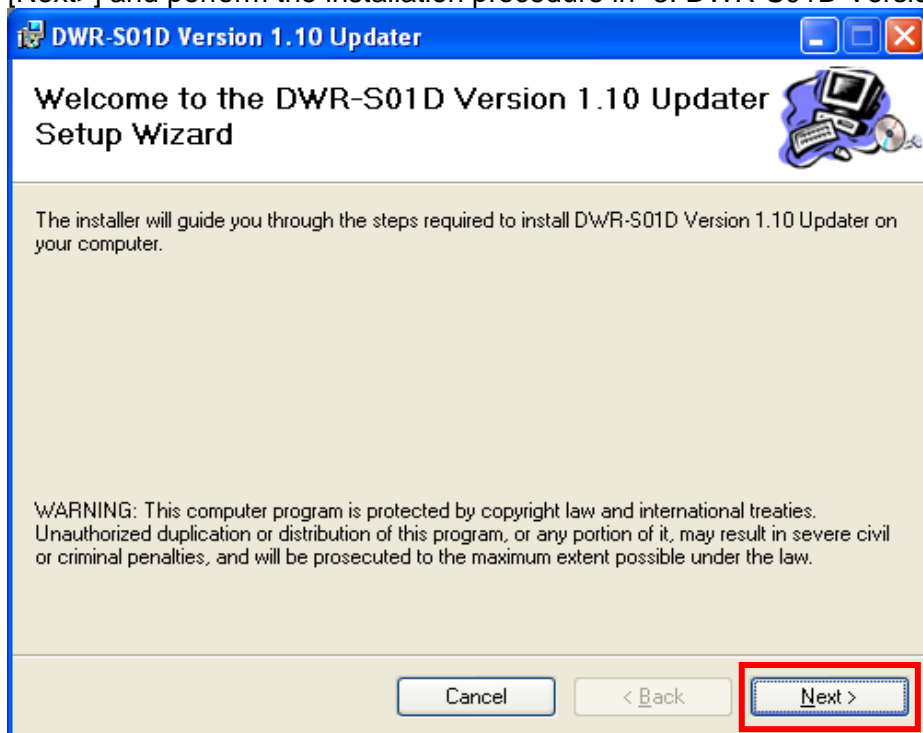
## DWR-S01D Updater Operating Instructions

### 2. .net Frameworks version 2.0

#### 2.1. Installation of .net Frameworks version 2.0 will be in progress.



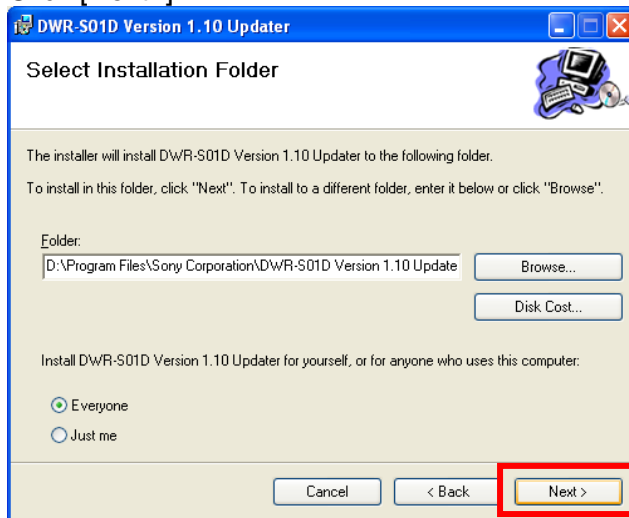
#### 2.2. When installation of .net Frameworks version 2.0 is complete, the following screen appears. Click [Next>] and perform the installation procedure in "3. DWR-S01D Version 1.13 Updater."



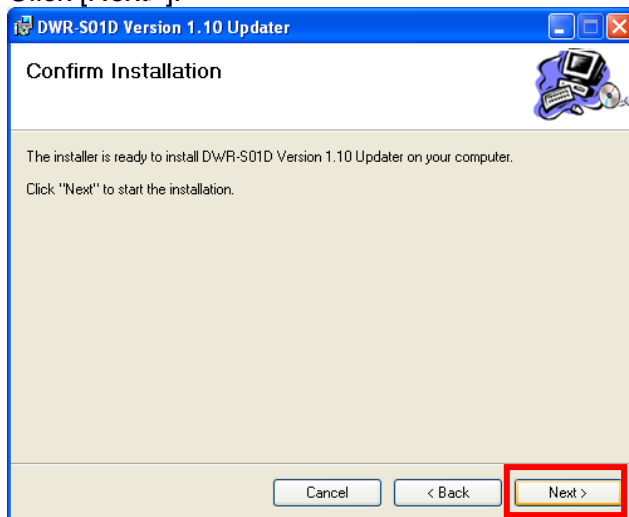
## DWR-S01D Updater Operating Instructions

### 3. DWR-S01D Version 1.13 Updater

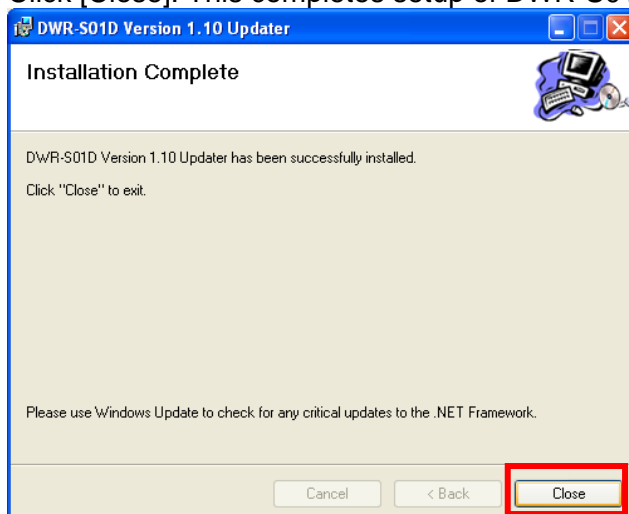
#### 3.1. Click [Next>].



#### 3.2. Click [Next>].



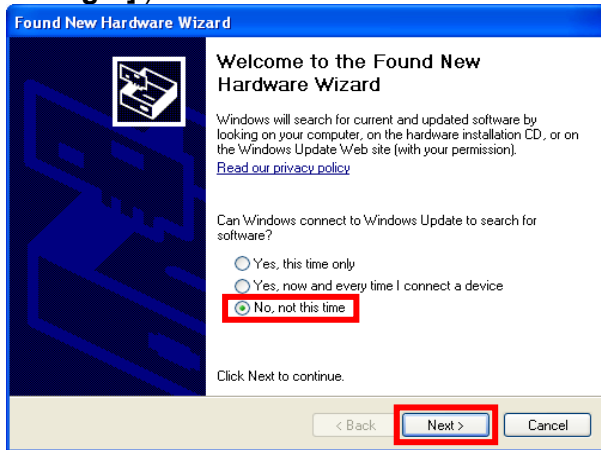
#### 3.3. Click [Close]. This completes setup of DWR-S01D Version 1.13 Updater.



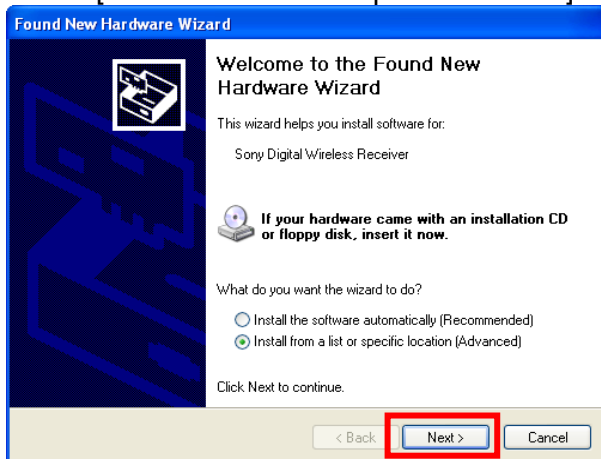
### [Installation Procedure for the USB Driver]

The installation procedure for the USB driver that is required for USB communication between the computer and the DWR-S01D follows.

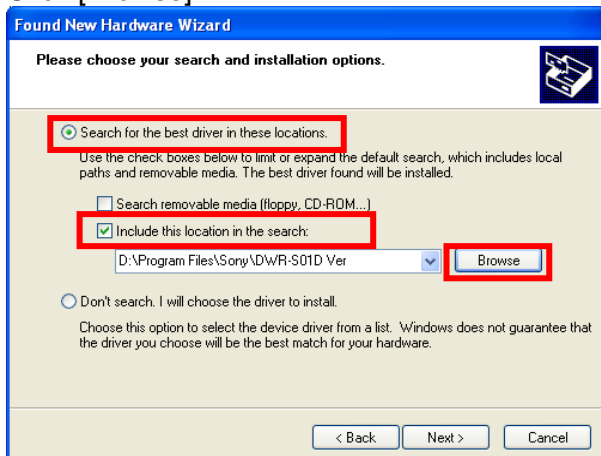
1. Connect the computer to the DWR-S01D using a USB cable.  
When the following screen appears after the DWR-S01D turns on, select [No, not this time] and click [Next>]. (If this screen does not appear, see **[Installing the USB Driver from the Device Manager].**)



2. Select [Install from a list or specific location] and click [Next>].



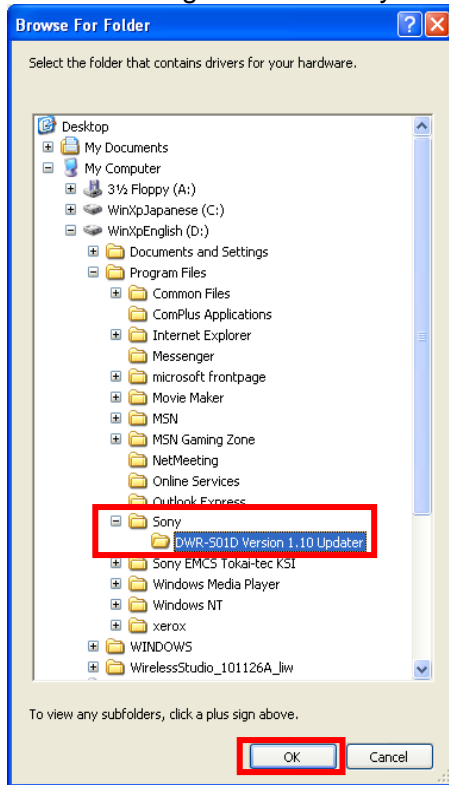
3. Select [Search for the best driver in these locations].  
Clear the [Search removable media] check box, and select [Include this location in the search].  
Click [Browse].



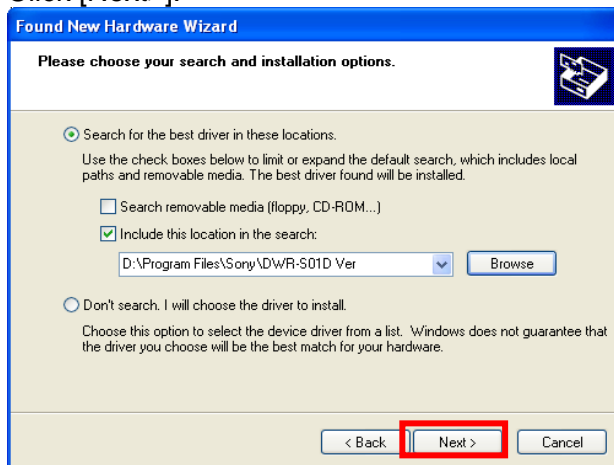


## DWR-S01D Updater Operating Instructions

4. Select "C:\Program Files\Sony\DWR-S01D Version 1.13 Updater," and click [OK].

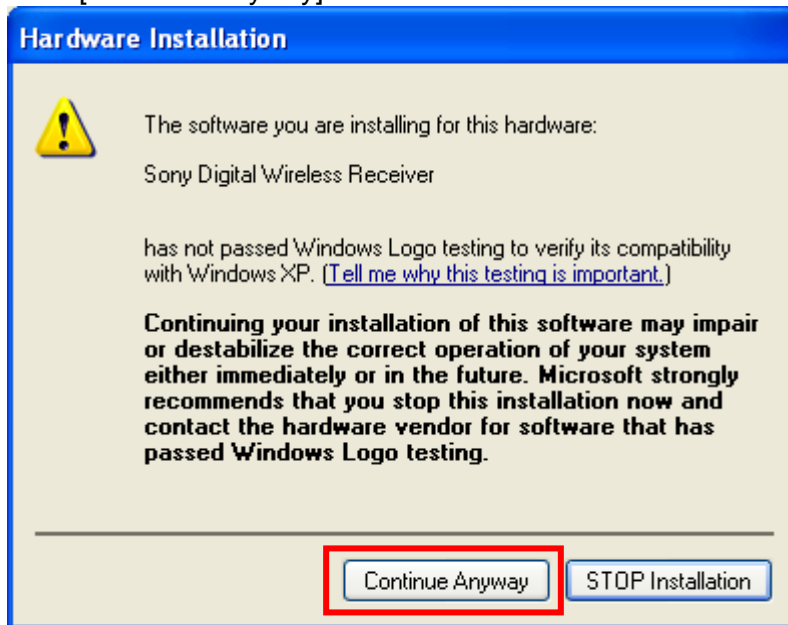


5. Click [Next>].

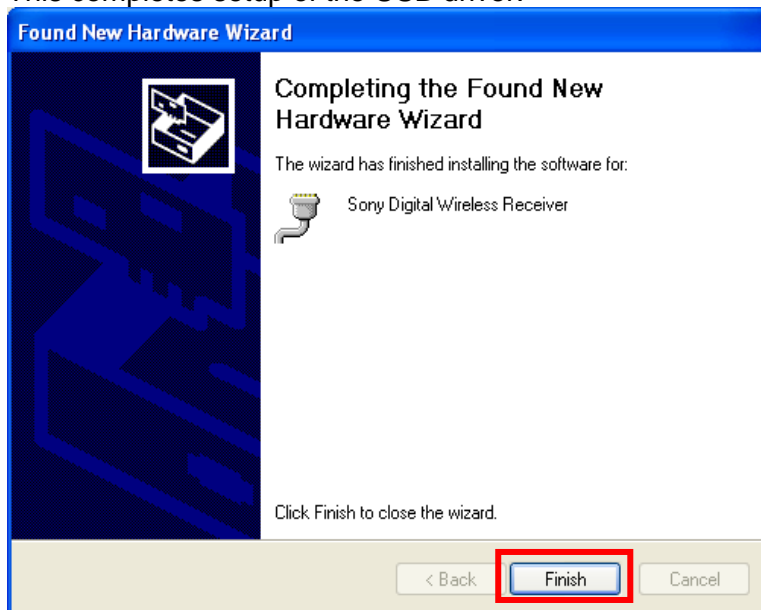


## DWR-S01D Updater Operating Instructions

- Click [Continue Anyway].



- Click [Finish].  
This completes setup of the USB driver.

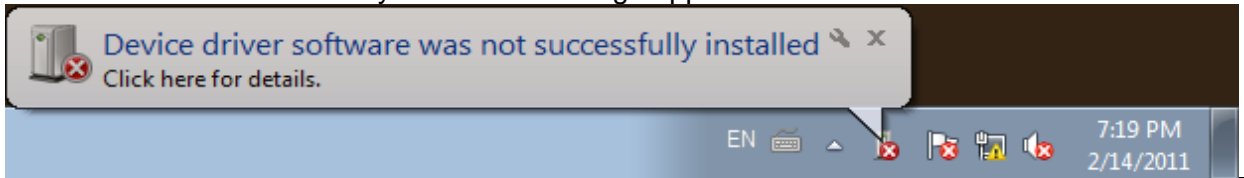


### [Installing the USB Driver from the Device Manager]

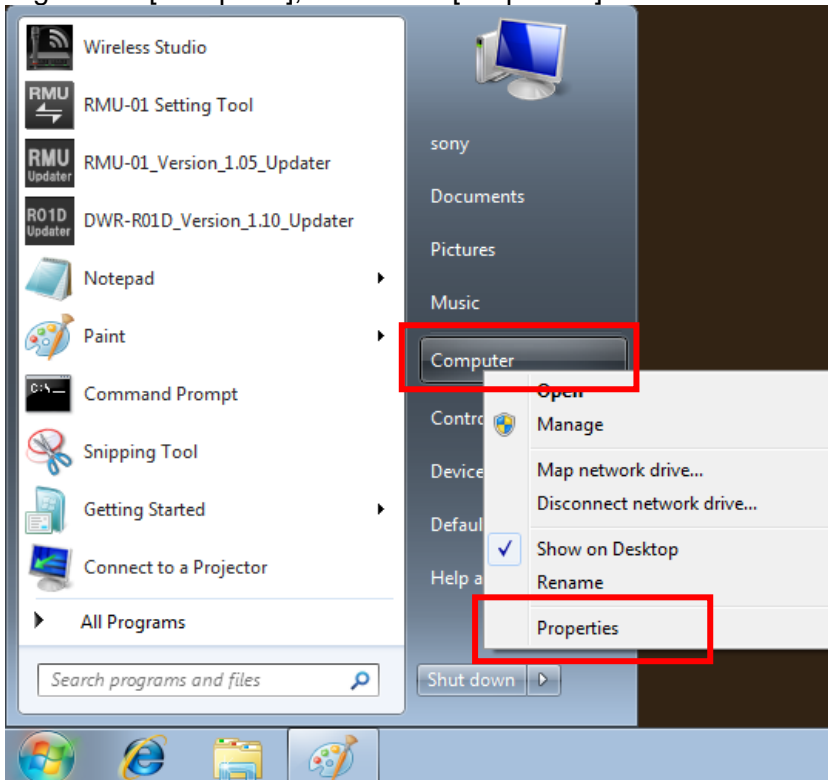
The procedure for installing the USB driver from the Device Manager follows.

This procedure is generally intended for installation of the USB driver in Windows 7. If the USB driver was properly installed in **[Installation Procedure for the USB Driver]**, proceed to **[Update Procedure]**.

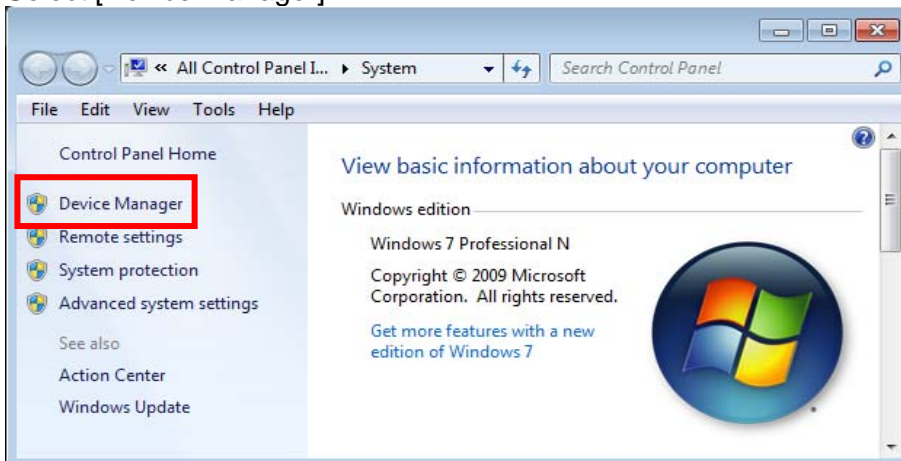
1. The wizard for USB driver installation does not appear in Windows 7. Instead, the “Device driver software was not successfully installed” message appears as follows.



2. Right-click [Computer], and select [Properties].

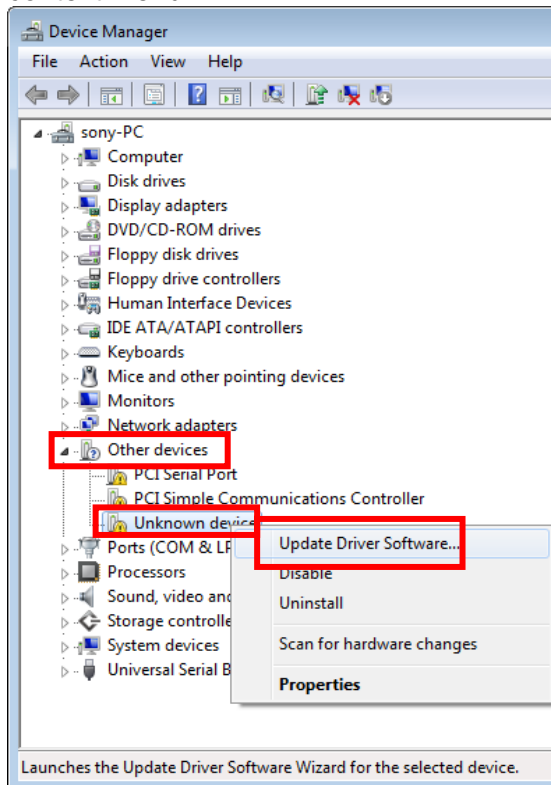


3. Select [Device Manager].

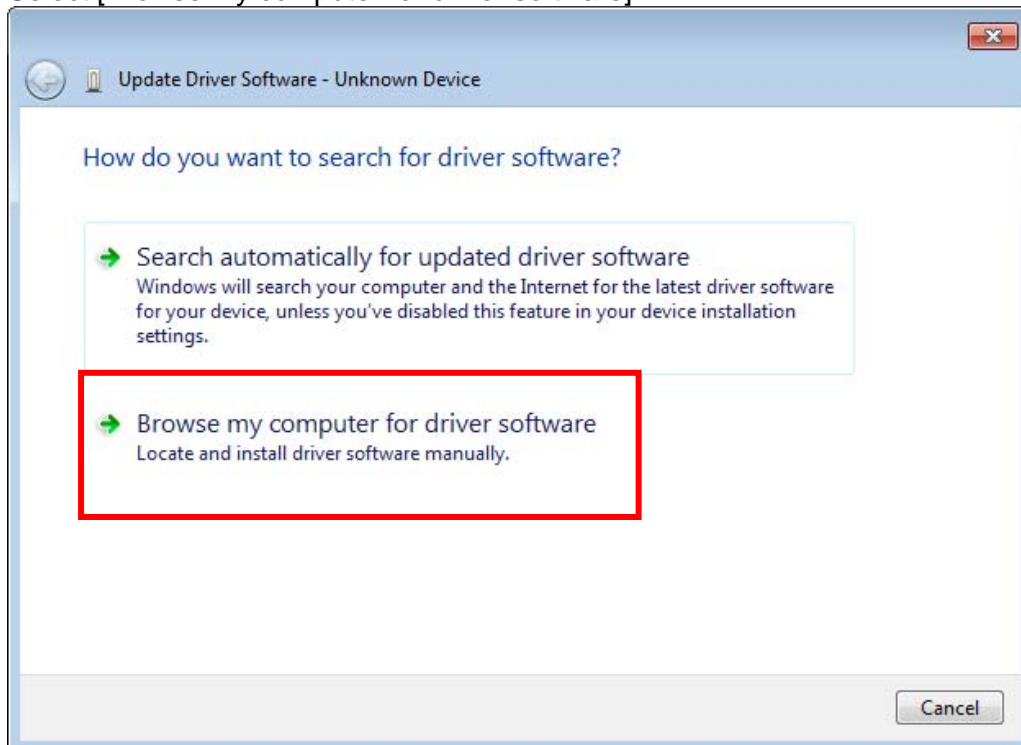


## DWR-S01D Updater Operating Instructions

4. Right-click [Unknown device] under [Other devices], and select [Update Driver Software] from the context menu.

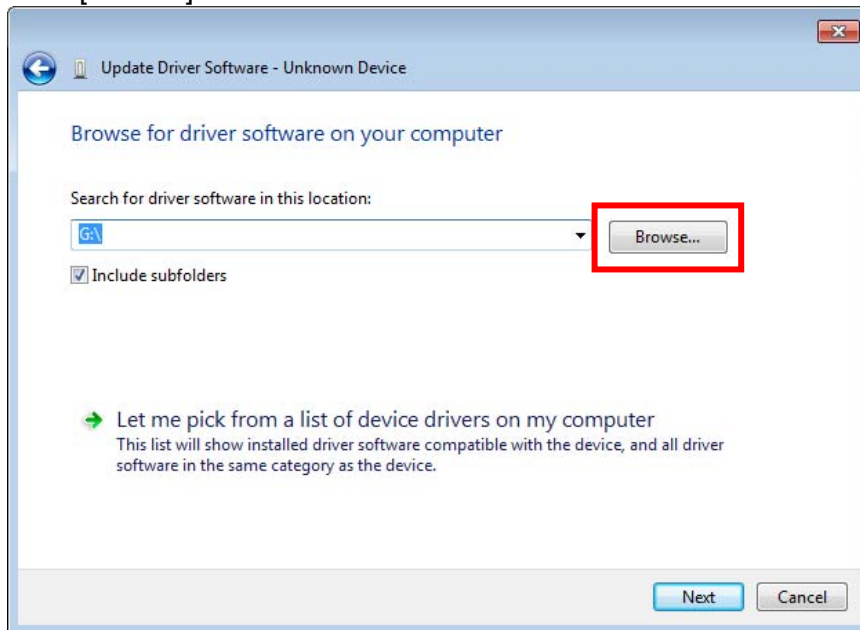


5. Select [Browse my computer for driver software].

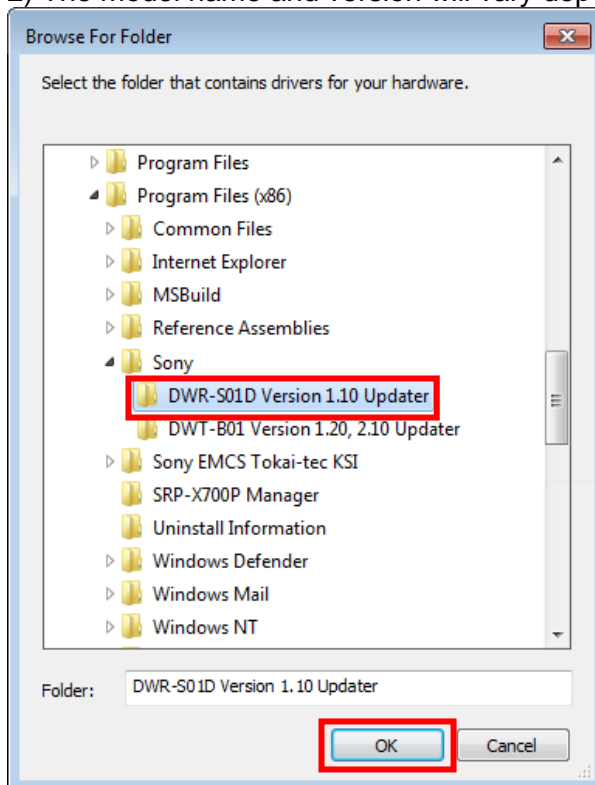


## DWR-S01D Updater Operating Instructions

### 6. Click [Browse].

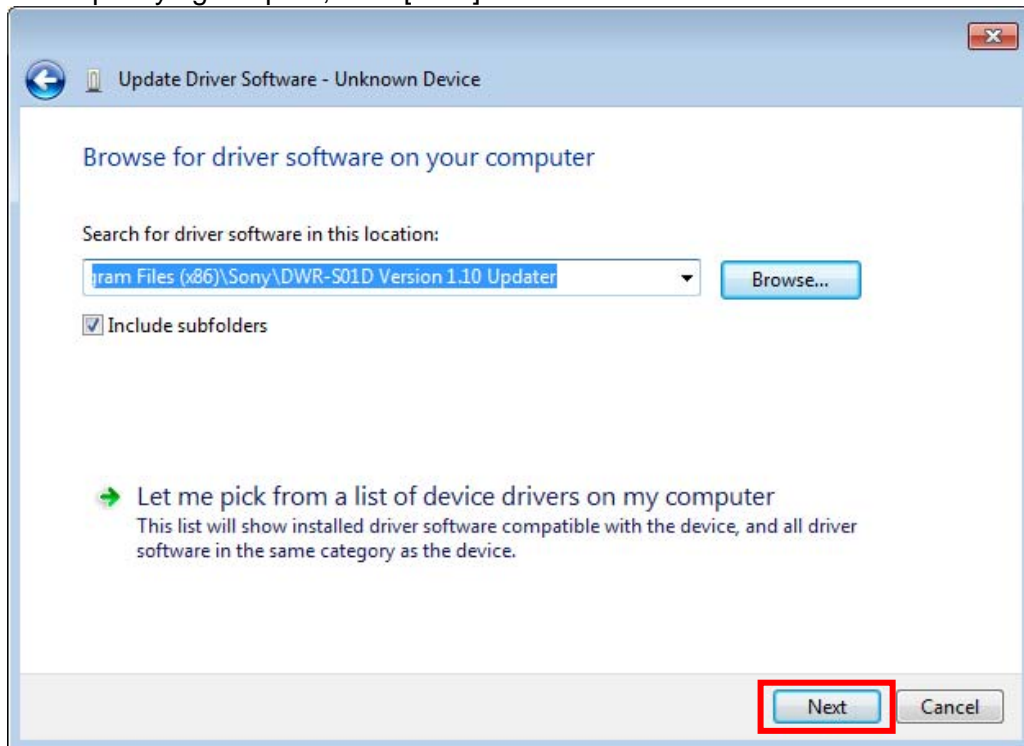


7. Select "Computer\C:\Program Files<sup>1)</sup>\Sony\DWR-S01D Version 1.13 Updater<sup>2)</sup>," and click [OK].
- 1) In 64-bit operating systems, select "Program Files (x86)."
- 2) The model name and version will vary depending on the updater.

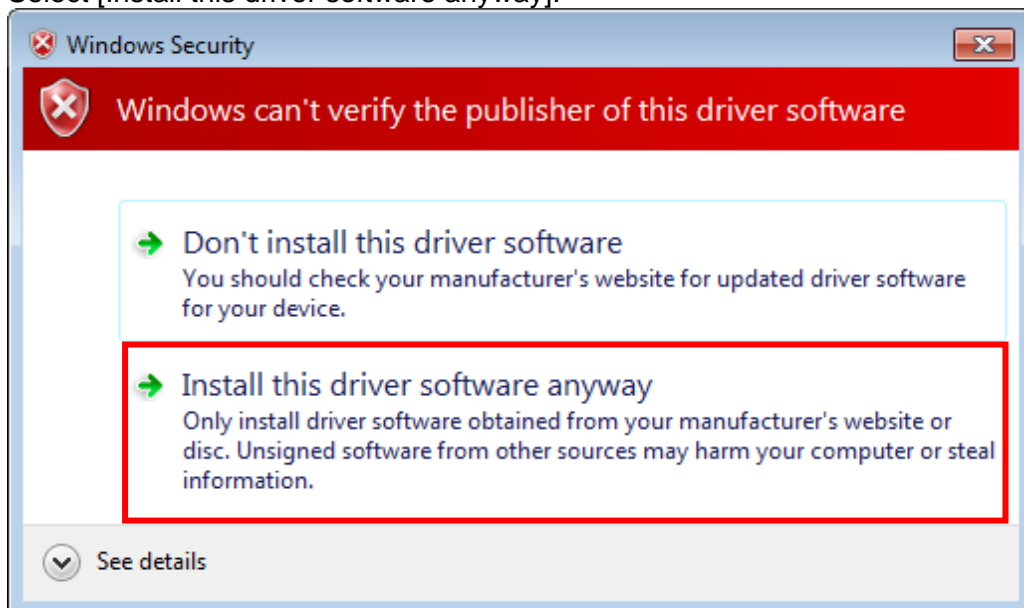


## DWR-S01D Updater Operating Instructions

8. After specifying the path, click [Next].

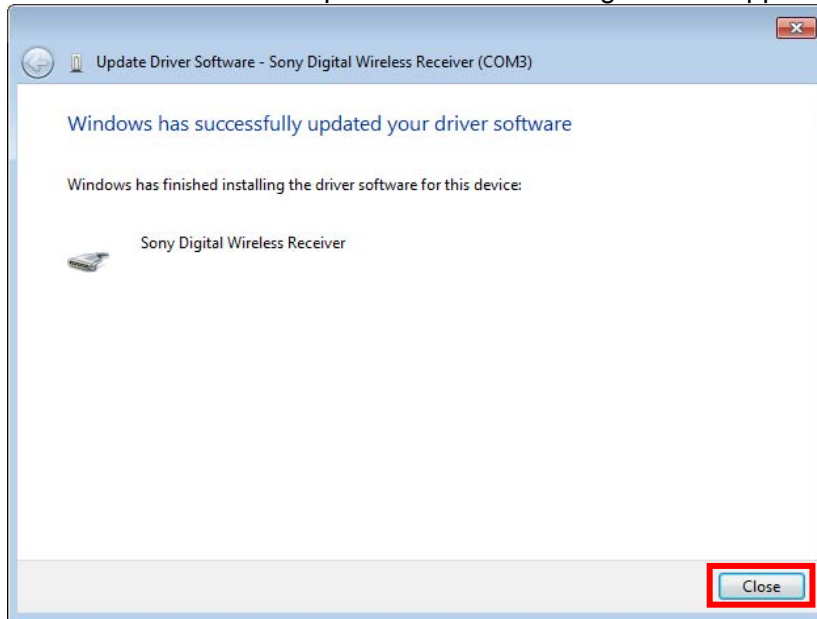


9. Select [Install this driver software anyway].

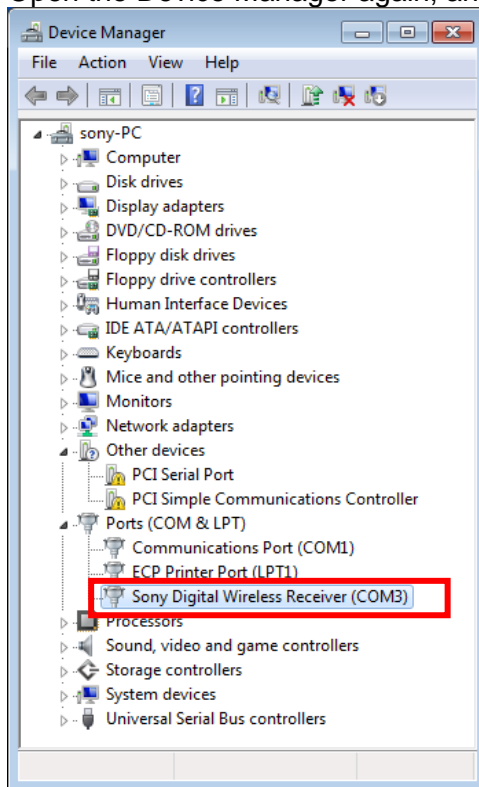


## DWR-S01D Updater Operating Instructions

10. When installation is complete and the following window appears, click [Close].



11. Open the Device Manager again, and verify that the USB driver is installed.



## DWR-S01D Updater Operating Instructions

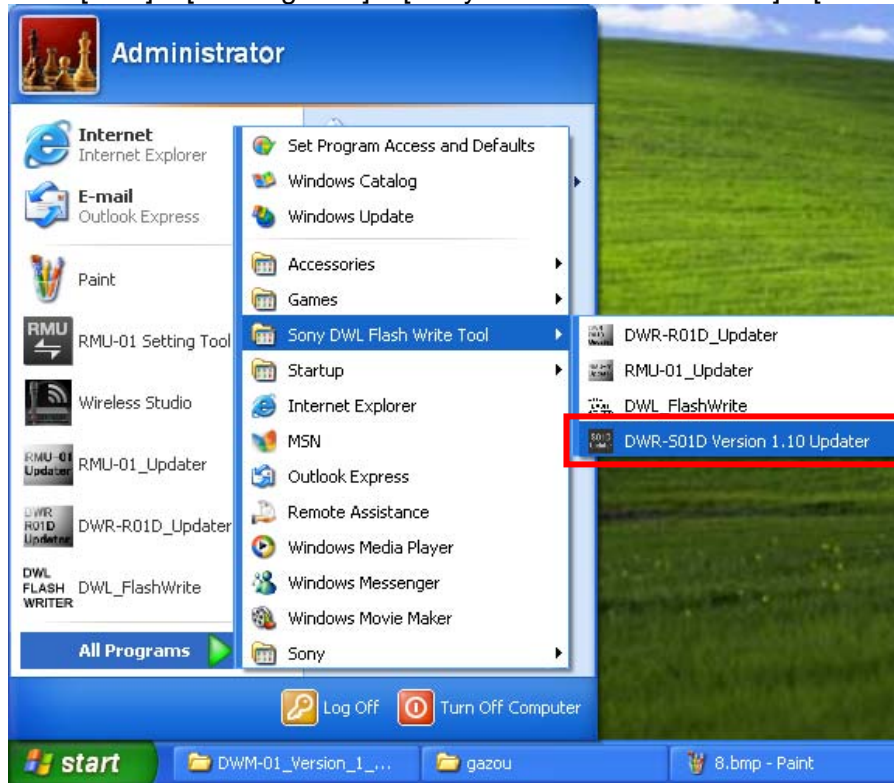
### [Update Procedure]

The procedure for updating the firmware on the DWR-S01D to version 1.13 using DWR-S01D Version 1.13 Updater follows.

The screens used are from DWR-S01D Version 1.10 Updater.

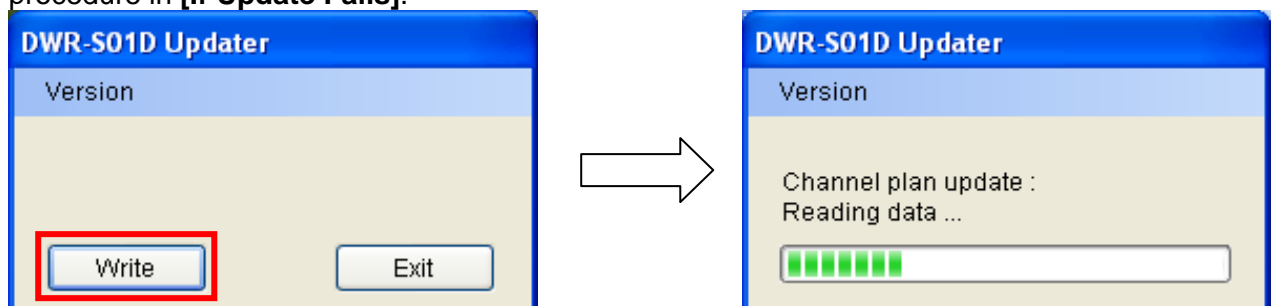
- 1 Start DWR-S01D Version 1.13 Updater.

Click [start] > [All Programs] > [Sony DWL Flash Write Tool] > [DWR-S01D Version 1.13 Updater].



- 2 Click [Write] to start the update.

[Note] If you turn off the DWR-S01D or disconnect the USB cable connecting the DWR-S01D to the computer while update is in progress, the update will fail. In the event that update fails, perform the procedure in **[If Update Fails]**.



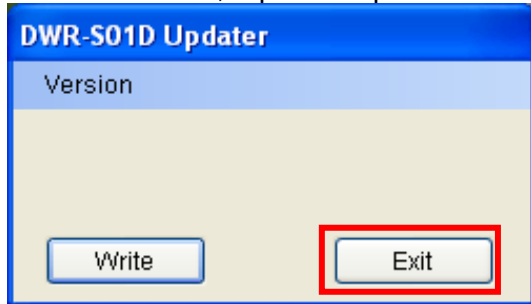


## DWR-S01D Updater Operating Instructions

- When the update is complete and a message indicating that the update was successful appears, click [OK].



- Click [Exit] to quit DWR-S01D Version 1.13 Updater. If you want to continue to update another DWR-S01D unit, repeat the procedure from step 2.



### [If Downgrade]

- Downgrade from Ver. 1.12 and more to Ver. 1.11 and less**

When you downgrade the software on DWR-S01D from Ver. 1.12 and more to Ver. 1.11 and less, be sure to go back up in a factory shipment state. When you do not this procedure, indication of GP/CH may be confused. A procedure that goes back up in a factory shipment state is as follows.

1. Turn on the DWR-S01D.
2. Press the minus button to display the FACTORY PRESET menu.
3. Continue pushing the SET button more than two seconds.
4. Select "YES" if displayed with "Are you sure?" .

- Procedure for restoring**

When indication of GP/CH is confused by not going back up in a factory shipment state, please perform the following procedure for restoring.

1. Prepare DWR-S01D Version 1.12 (and more) Updater
2. Using updater prepared in 1., update DWR-S01D.
3. Go back up in a factory shipment state, if update is completed.
4. Prepare DWR-S01D Version 1.11 (and less) Updater.
5. Using updater prepared in 4., update DWR-S01D.

- If you downgrade DWR-S01D applied a custom setting to Ver. 1.12 and less**

if you downgrade DWR-S01D applied a custom setting to Ver. 1.12 and less, you must erase the custom setting. When you do not this procedure, indication of GP/CH may be confused. A procedure that erases the custom setting is as follows.

1. Connect the computer to the DWR-S01D using a USB cable.
2. Start DWX Custom Setting Tool, and click [Search] button.

## DWR-S01D Updater Operating Instructions

3. If DWX Custom Setting Tool detects the DWR-S01D that is connected the computer, click [Erase] button.
- **Procedure for restoring**

When you downgrade DWR-S01D without erasing a custom setting, indication of GP/CH is confused. Please perform the following procedure for restoring.

  1. Prepare DWR-S01D Version 1.13 (and more) Updater.
  2. Using updater prepared in 1., update DWR-S01D
  3. Start DWX Custom Setting Tool, and click [Search] button, if update is completed.
  4. If DWX Custom Setting Tool detects the DWR-S01D that is connected the computer, click [Erase] button.
  5. Prepare DWR-S01D Version 1.13 (and less) Updater.
  6. Using updater prepared in 5., update DWR-S01D.

### [Verifying Update]

The procedure for verifying the firmware version of the DWR-S01D follows.

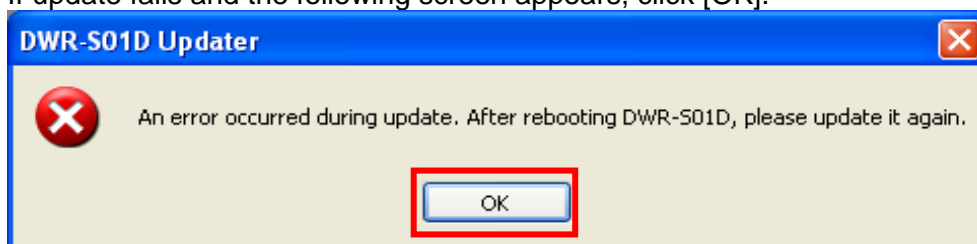
1. Turn on the DWR-S01D.
2. Press the minus button to display the VERSION menu.
3. Verify that 1.13 appears for the VERSION item.  
(If you used a different version of DWR-S01D Updater, verify that that version appears.)

### [If Update Fails]

The procedure for restoring an update failure follows.

The screens used are from DWR-S01D Version 1.10 Updater.

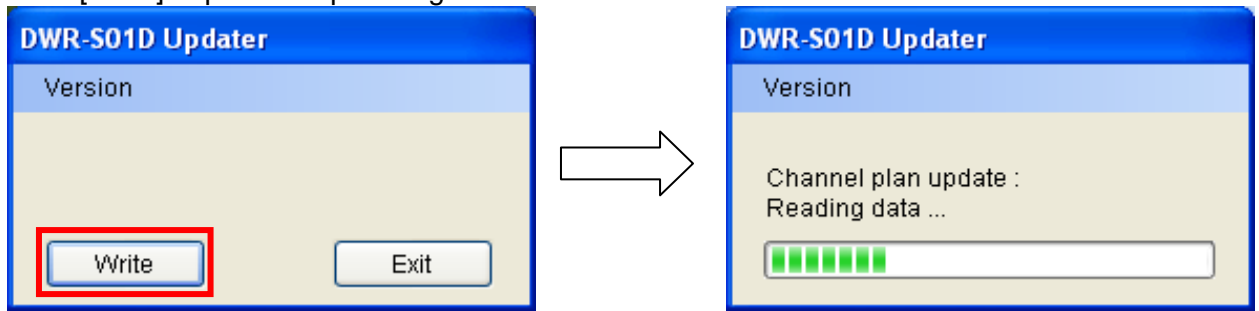
1. If update fails and the following screen appears, click [OK].



2. Turn off the DWR-S01D, then turn it on again.  
(When you restart the DWR-S01D after an update fails, the DWR-S01D unit's screen will be blank, but this is not a malfunction.)

## DWR-S01D Updater Operating Instructions

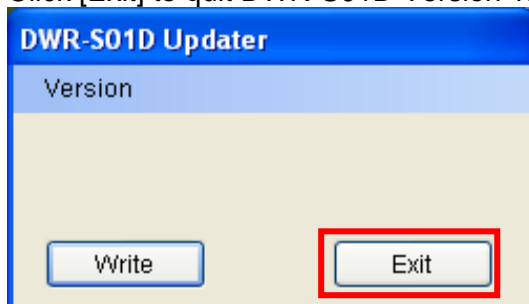
- Click [Write] to perform update again.



- When the update is complete and a message indicating that the update was successful appears, click [OK]. (The following screen appears when updating to version 1.13)



- Click [Exit] to quit DWR-S01D Version 1.13 Updater.

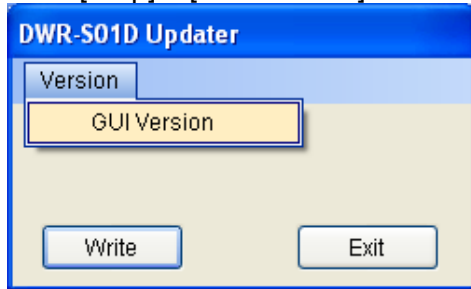


**[Miscellaneous]**

The procedure for verifying the version of DWR-S01D Updater follows.

The screens used are from DWR-S01D Version 1.10 Updater.

1. Click [Help] > [GUI Version].



2. The version of this software appears.

