

ECM-FT5

Electret Condenser Microphone

SONY
make.believe



A new flat-shape lavalier microphone, omni-directional and ultra-miniature

MAIN FEATURES

■ High Audio Quality

The metal body of Sony's ECM-FT5 offers increased durability and improved audio quality by blocking vibration and resonance. Another advantage of the metal construction is it shields the microphone, blocking RF noise interference.



■ Easy to Hide

The slim 4.9-mm profile of the ultra-miniature ECM-FT5 is designed to be easily concealed under clothing, and its sleek contours help prevent noise pick-up from garments.



■ Water-resistant Design

A moisture-repellent screen covers the mic aperture to help prevent sweat and dampness from entering the case.

■ Reliable Interface Options

The ECM-FT5 offers two connection types for use with Sony's wireless transmitters.



ECM-FT5 BC
For the DWX & WL-800
Series



ECM-FT5 BMP
For the UWP Series

■ Useful Supplied Accessories

The supplied accessories support a variety of uses.

Tie Clip:

Use to attach the mic to clothing by clipping on a pocket, button hole, or other suitable parts of a garment

Taping Mount:

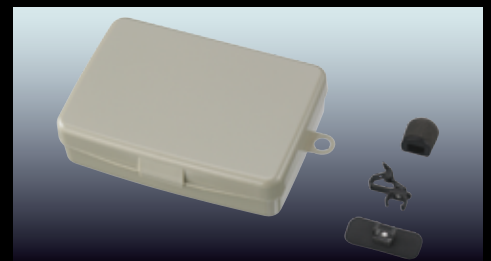
Use to attach the mic directly to fabric surfaces

Wind Screen:

Use to suppress strong wind noise

Carrying Case:

Use to carry the ECM-FT5 and accessories

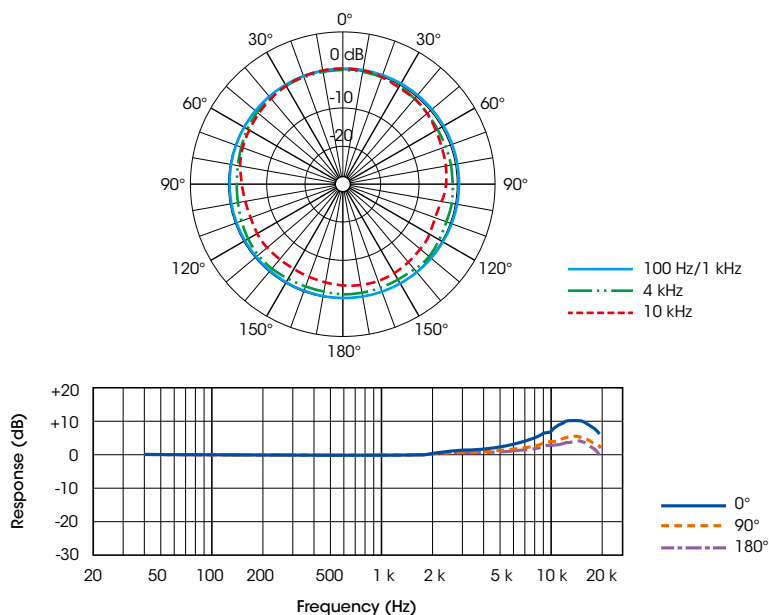


Specifications

ECM-FT5	
General	
Type	Back electret condenser microphone
Voltage	1.1-10 V
Power consumption	0.2 mA or less
Output connector	ECM-FT5BC: Sony SMC9-4P type ECM-FT5BMP: TRS connector (3.5 dia.) with lock
Dimensions	4.9 x 7.6 x 14 mm (7/32 x 5/16 x 9/16 in.) (microphone unit)
Mass	1.7 g (0.06 oz.) (excluding cable and connector)
Supplied accessories	Wind screen (1), Tie clip (1), Taping mount (1), Carrying case (1), Operating instructions (1)
Performance	
Frequency response	40 Hz to 20 Hz
Directivity	Omni-directional
Output impedance	1.2 kΩ ±20%, unbalanced
Sensitivity	-43 dB (0 dB=1 V/Pa, 1 kHz)
Signal-to-noise ratio	68 dB (typ) (IEC 179 A-weighted, 1 kHz, 1 Pa)
Inherent noise	26 dB SPL (typ) (0 dB=2x10 ⁻⁵ Pa)
Wind noise*	45 dB SPL or less (with wind screen) 65 dB SPL or less (without wind screen)
Maximum input sound pressure level	134 dB SPL (typ) (input level for 3% waveform distortion at 1 kHz, converted into equivalent input sound pressure level: 0 dB=2x10 ⁻⁵ Pa)
Dynamic range	108 dB (typ)
Operating temperature	0 °C to +50 °C (32 °F to 122 °F)
Storage temperature	-20 °C to +60 °C (-4 °F to +140 °F)

* Wind noise is the value measured by applying a wind velocity of 2 m/sec. (6.6 ft./sec.) to the microphone from all directions. The mean value is taken and converted to the equivalent sound pressure level. (0 dB=2x10⁻⁵ Pa)

Design and specifications are subject to change without notice.



Distributed by

MK10927V1OH812MAR

©2012 Sony Corporation. All rights reserved.
 Reproduction in whole or in part without written permission is prohibited.
 Features and specifications are subject to change without notice.
 "SONY", "make.believe" are trademarks of Sony Corporation.
 All other trademarks are the property of their respective owners.

The ECM-FT5 are produced at Sony Taiyo, which has received ISO14001, the Environmental Management System certification.

