

# **DWT-P01 Updater**

## **Operating Instructions**

Issue Date: March 28, 2013

# Table of Contents

[Overview] .....	3
[Functions] .....	3
[Preparations] .....	4
[About this Software] .....	4
[Installation Procedure] .....	5
[Installation Procedure for the USB Driver] .....	9
[Installing the USB Driver from the Device Manager] .....	12
[Update Procedure] .....	17
[If Downgrade] .....	18
[Verifying Update] .....	19
[If Update Fails] .....	19
[Miscellaneous] .....	21

## [Overview]

This document serves as the operating instructions for the PC software (herein referred to as “DWT-P01 Version 1.31, 2.21 Updater”) that is used to update the firmware version of the DWT-B01.

\* The version number may vary depending on the firmware version.

## [Functions]

DWT-P01 Version 1.31, 2.21 Updater\* allows you to update the firmware on the DWT-P01 to version 1.31 or 2.21. You can update the DWT-P01 without particular concern for whether your unit is an older model or a power-saving model, as this updater recognizes these two types automatically. However, the model type will determine whether the DWT-P01 is updated to version 1.31 or version 2.21. See the following to determine the model of your DWT-P01.

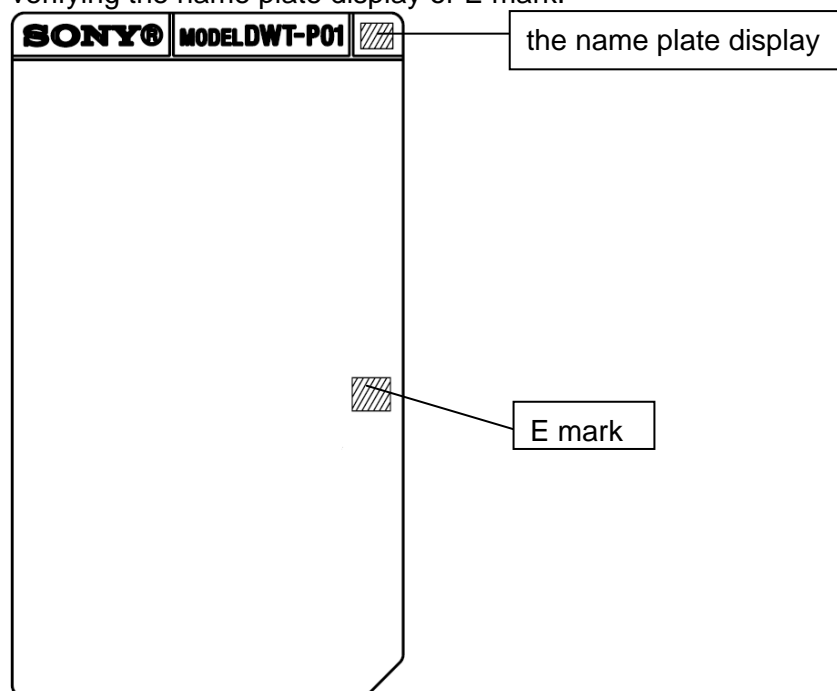
You can determine the model of your DWT-P01 by checking the name plate or the transmitter's display.

### 1. Checking the name plate

- US models, European models

E mark	Update version
Not present	Version 1.31*
Present	Version 2.21*

Locate the name plate on the rear of the transmitter, and refer to the following illustration when verifying the name plate display or E mark.



### 2. Checking the transmitter's display

Turn on the transmitter, and use the minus button to navigate through the menu to the VERSION item. The version displayed will determine the version to which the unit is updated.

Transmitter version number	Update version
1.XX	Version 1.31*
2.XX	Version 2.21*

\* The version number may vary depending on the firmware version.

## [Preparations]

### <Acquiring the Software File>

File name: DWT-P01\_Version\_1\_21\_2\_11\_Updater.zip\*

\* The version number may vary depending on the firmware version.

### <Computer>

The system requirements for using this software are as follows.

OS:	Windows XP SP2 or later, Windows Vista, Windows 7
USB cable:	USB cable supplied with unit



## [About this Software]

- This manual and the software described herein may not be reproduced, leased or lent, in whole or in part, without prior written approval from Sony Corporation.
- Sony Corporation expressly disclaims all responsibility with respect to losses suffered by the customer or any third party as a result of use of this software.
- Sony Corporation shall provide replacement solely in the event of manufacturer defects.
- This software may not be used for purposes other than those specified.
- Design and specifications of this software are subject to change without notice.
- The source code of this software may not be modified, altered, reverse-engineered, decompiled, disassembled, or otherwise analyzed.
- Install this software and update the specified devices according to the procedures described in the operating instructions.

## DWT-P01 Updater Operating Instructions

### [Installation Procedure]

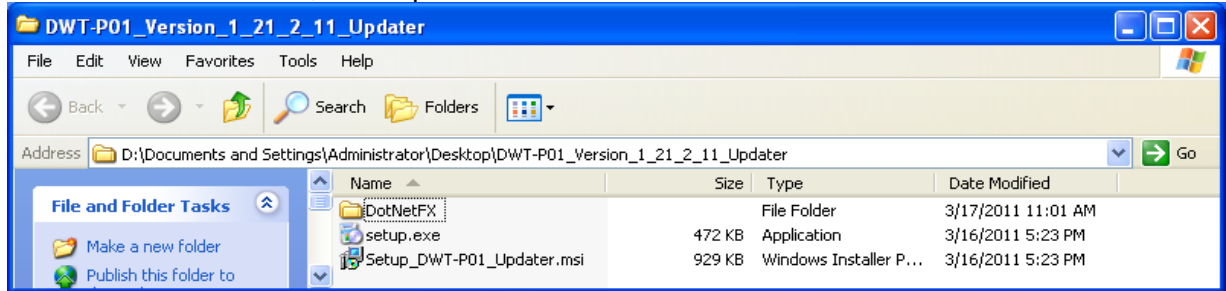
The installation procedure for DWT-P01 Version 1.31, 2.21 Updater follows.

The screens used are from DWT-P01 Version 1.21, 2.11 Updater.

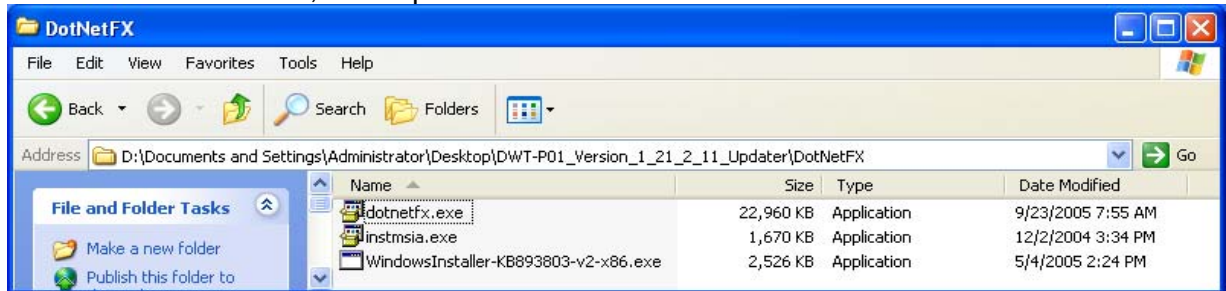
#### 1. Starting

##### 1.1. The folder configuration is as follows.

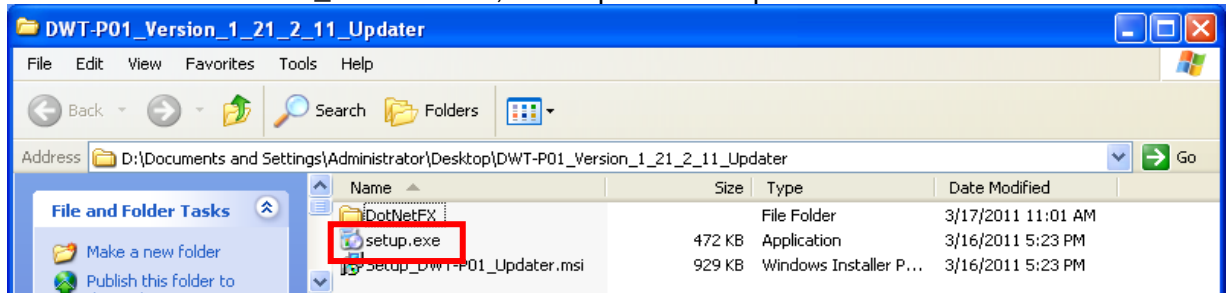
###### DWT-P01 Version 1.31, 2.21 Updater



###### DWT-P01 Version 1.31, 2.21 Updater \DotNetFx



##### 1.2. Double-click "DWT-P01\_Version 1.31, 2.21 Updater \setup.exe."



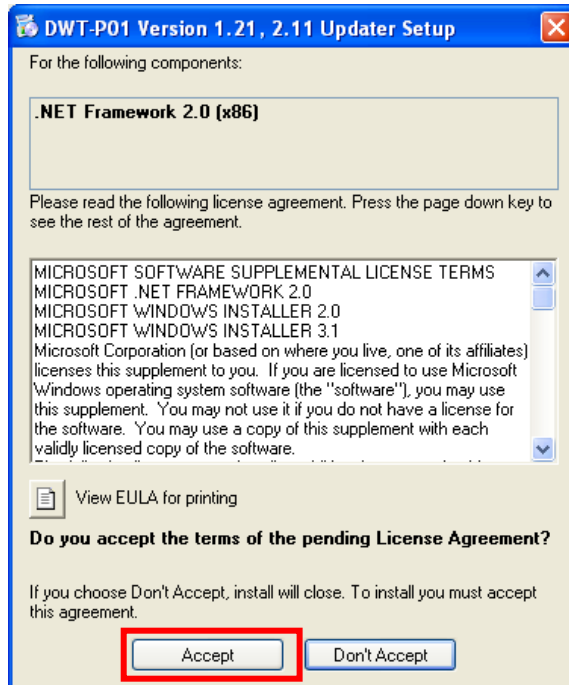
## DWT-P01 Updater Operating Instructions

1.3. After double-clicking, perform installation using the following procedure.

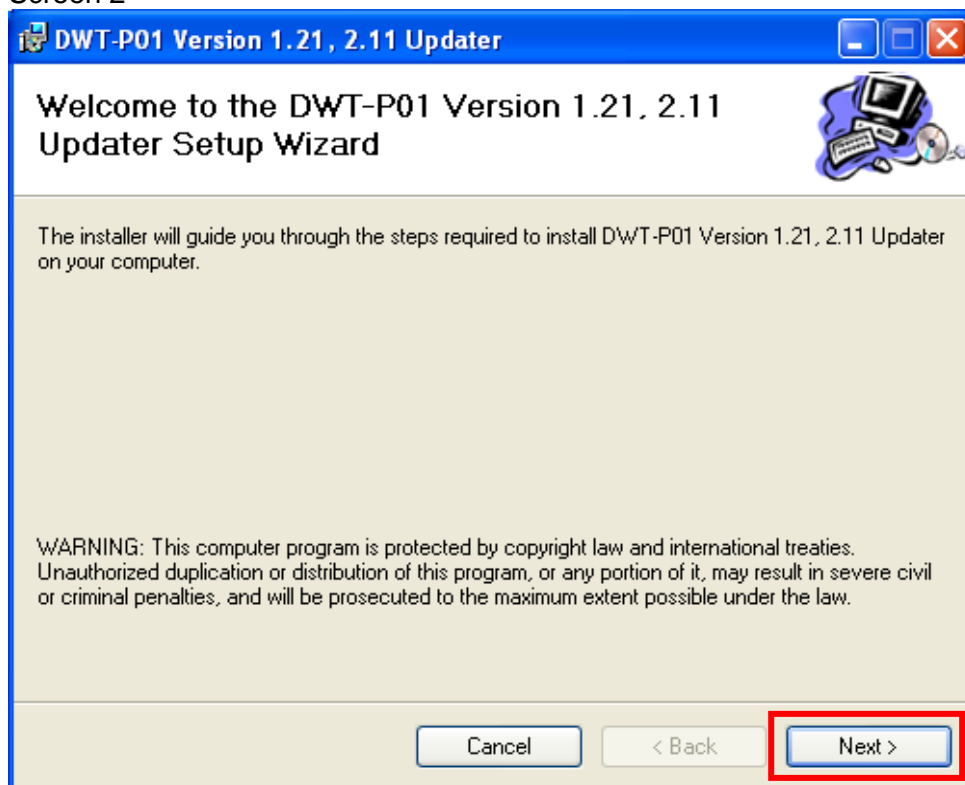
1.3.1. If screen 1 appears, click [Accept] and perform the installation procedure in “2. .net Frameworks version 2.0.”

1.3.2. If screen 2 appears, click [Next>] and perform the installation procedure in “3. DWT-P01 Version 1.31, 2.21 Updater.”

Screen 1



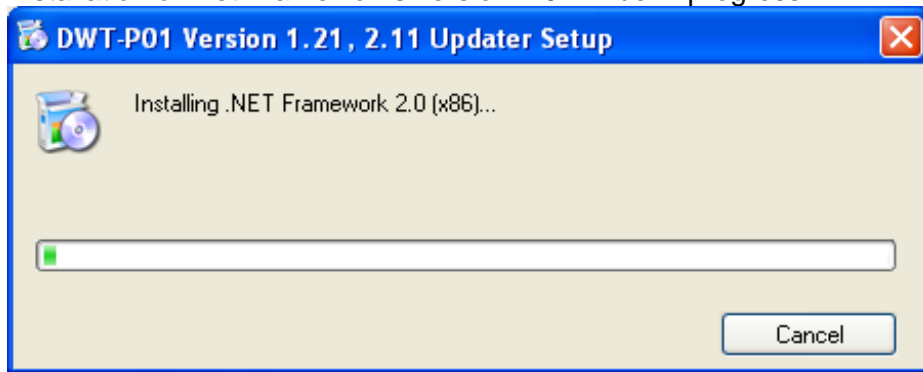
Screen 2



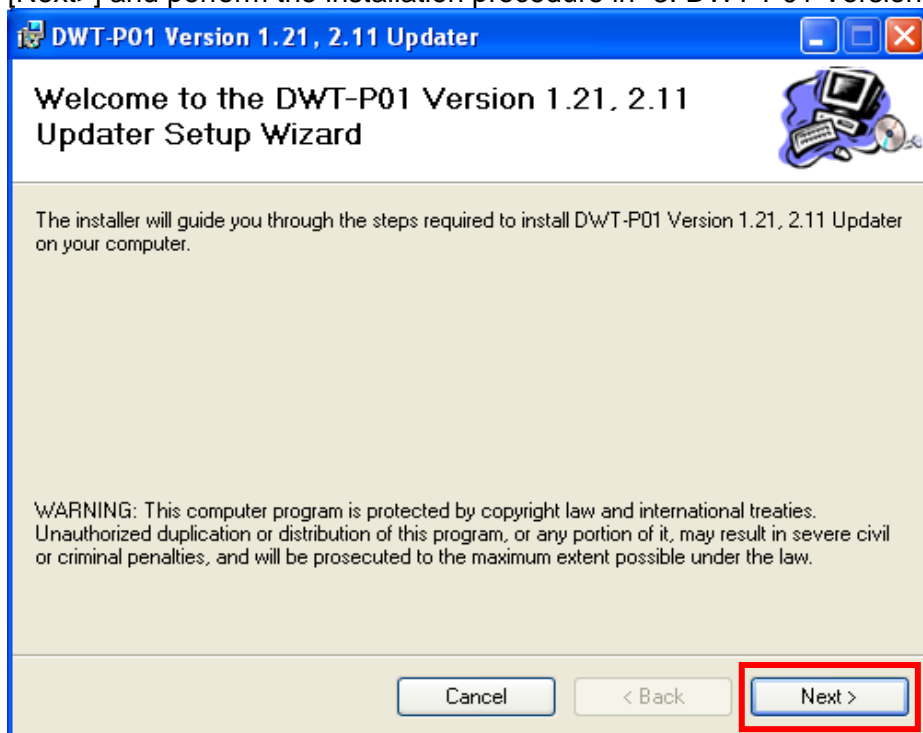
## DWT-P01 Updater Operating Instructions

### 2. .net Frameworks version 2.0

#### 2.1. Installation of .net Frameworks version 2.0 will be in progress.



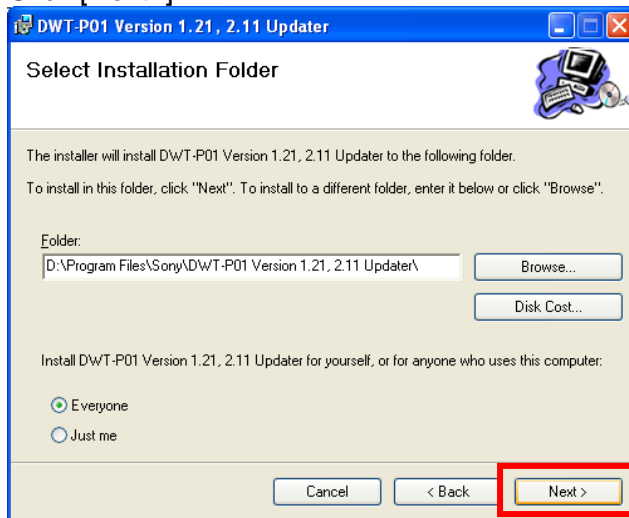
#### 2.2. When installation of .net Frameworks version 2.0 is complete, the following screen appears. Click [Next>] and perform the installation procedure in "3. DWT-P01 Version 1.31, 2.21 Updater."



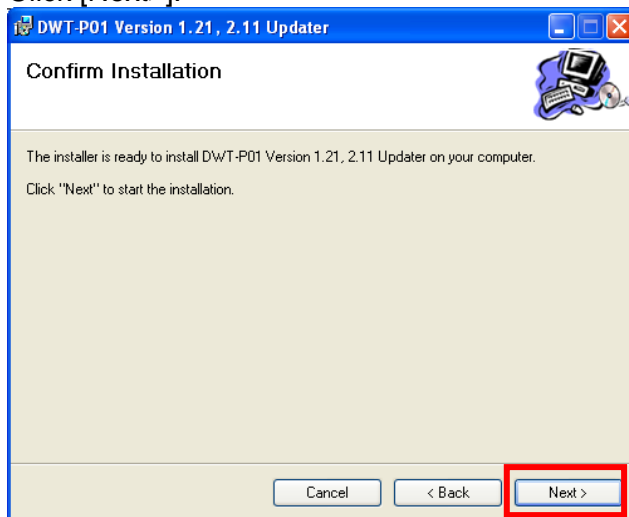
## DWT-P01 Updater Operating Instructions

### 3. DWT-P01 Version 1.31, 2.21 Updater

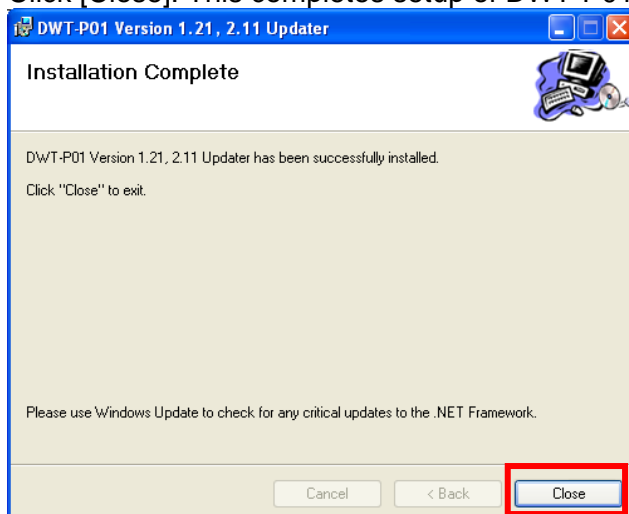
#### 3.1. Click [Next>].



#### 3.2. Click [Next>].



#### 3.3. Click [Close]. This completes setup of DWT-P01 Version 1.31, 2.21 Updater.

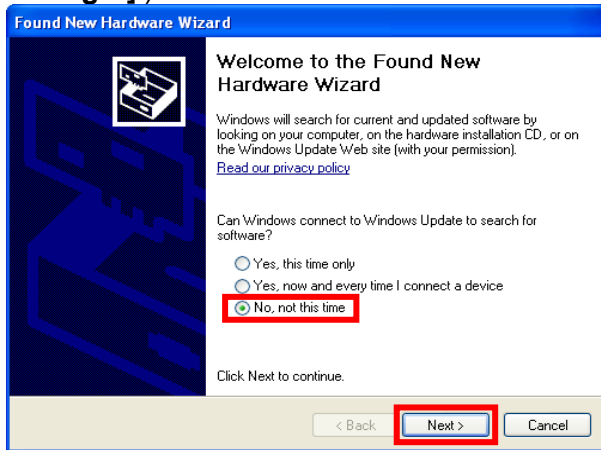




### [Installation Procedure for the USB Driver]

The installation procedure for the USB driver that is required for USB communication between the computer and the DWT-P01 follows.

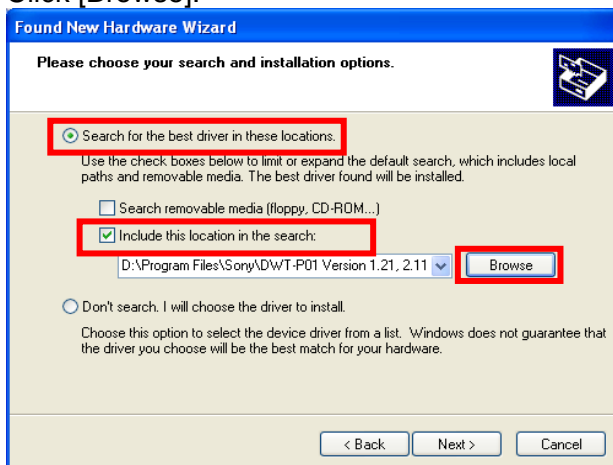
1. Connect the computer to the DWT-P01 using a USB cable.  
When the following screen appears after the DWT-P01 turns on, select [No, not this time] and click [Next>]. (If this screen does not appear, see **[Installing the USB Driver from the Device Manager].**)



2. Select [Install from a list or specific location] and click [Next>].

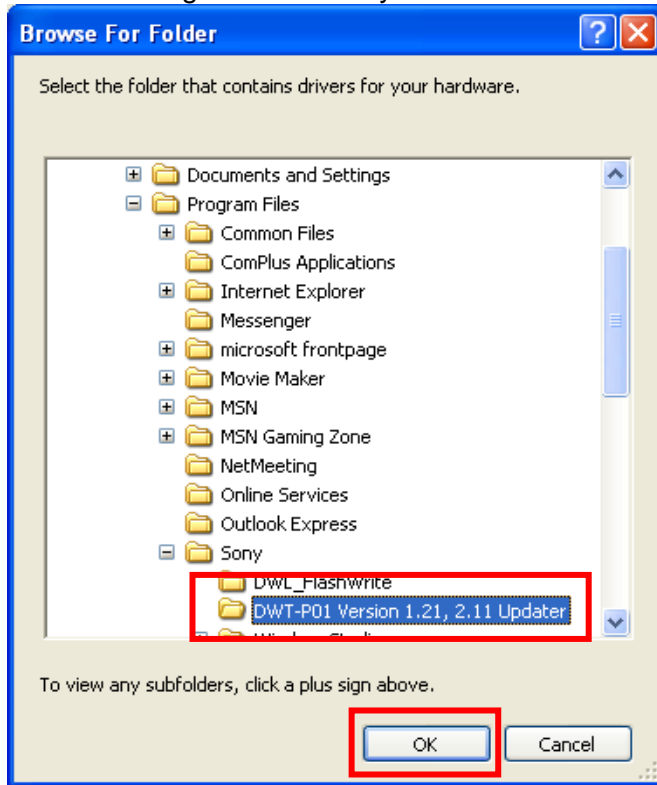


3. Select [Search for the best driver in these locations].  
Clear the [Search removable media] check box, and select [Include this location in the search].  
Click [Browse].

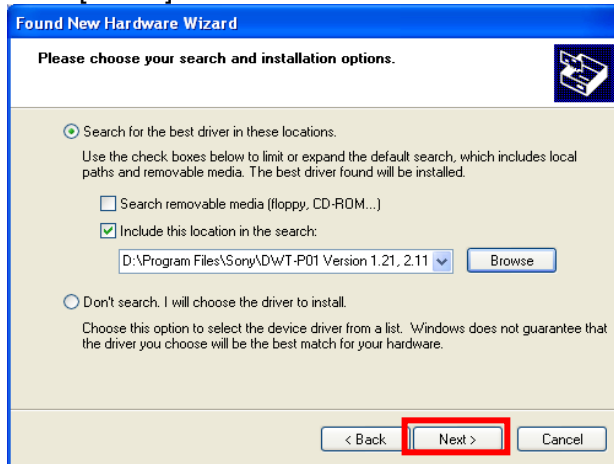


## DWT-P01 Updater Operating Instructions

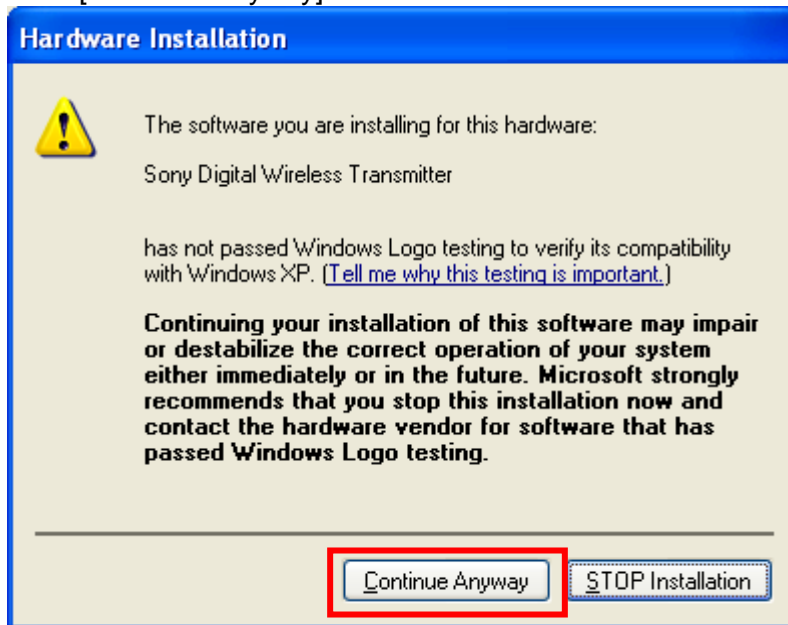
4. Select "C:\Program Files\Sony\DWT-P01 Version 1.31, 2.21 Updater," and click [OK].



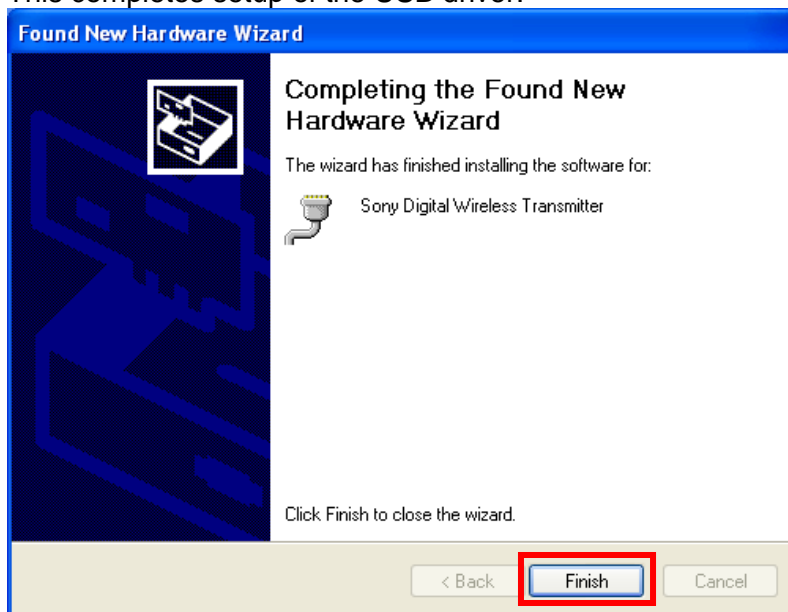
5. Click [Next>].



6. Click [Continue Anyway].



7. Click [Finish].  
This completes setup of the USB driver.

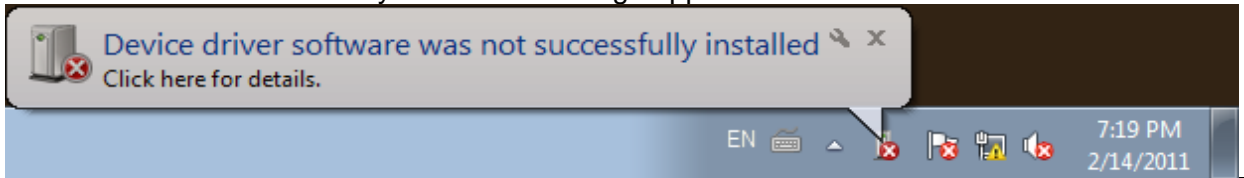


**[Installing the USB Driver from the Device Manager]**

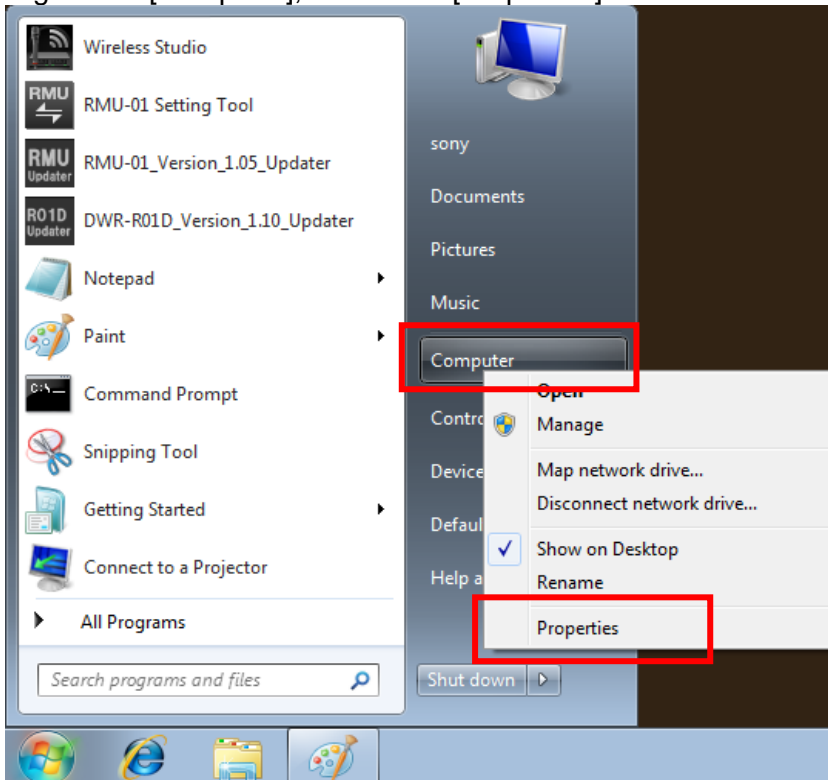
The procedure for installing the USB driver from the Device Manager follows.

This procedure is generally intended for installation of the USB driver in Windows 7. If the USB driver was properly installed in **[Installation Procedure for the USB Driver]**, proceed to **[Update Procedure]**.

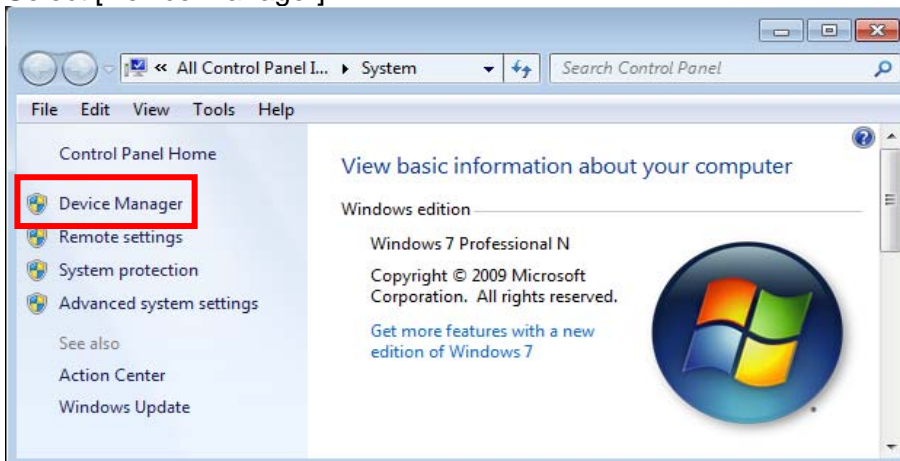
1. The wizard for USB driver installation does not appear in Windows 7. Instead, the “Device driver software was not successfully installed” message appears as follows.



2. Right-click [Computer], and select [Properties].

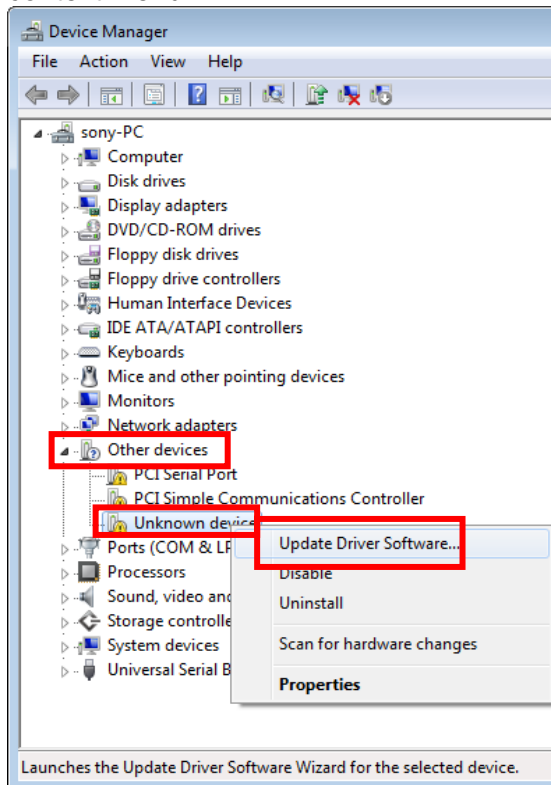


3. Select [Device Manager].

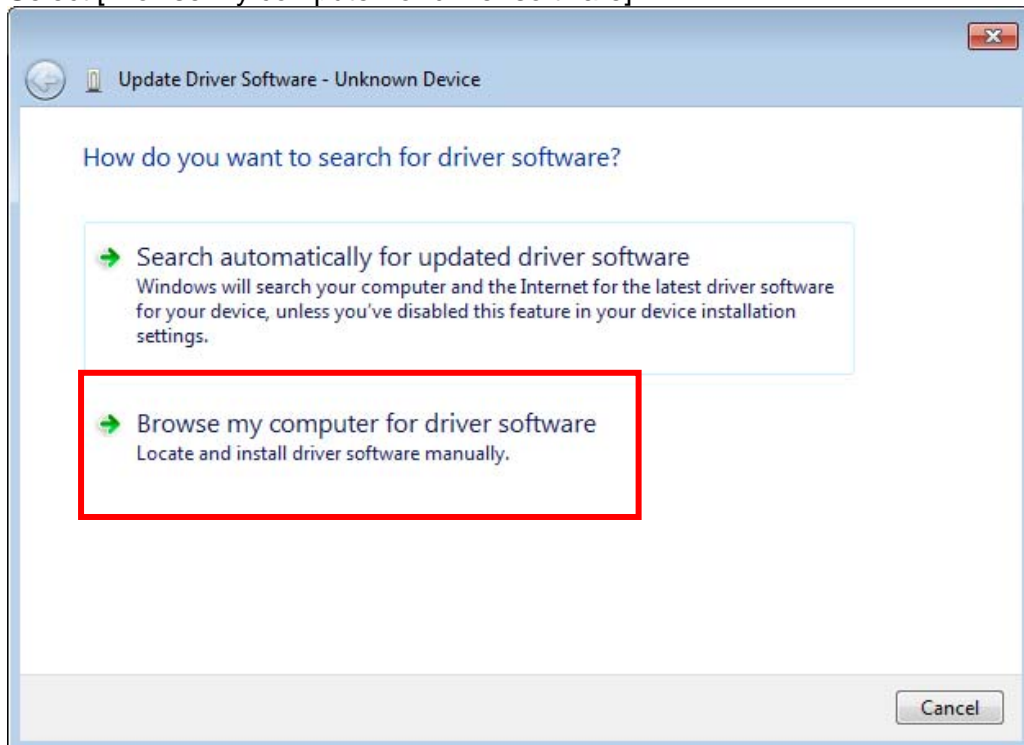


## DWT-P01 Updater Operating Instructions

4. Right-click [Unknown device] under [Other devices], and select [Update Driver Software] from the context menu.

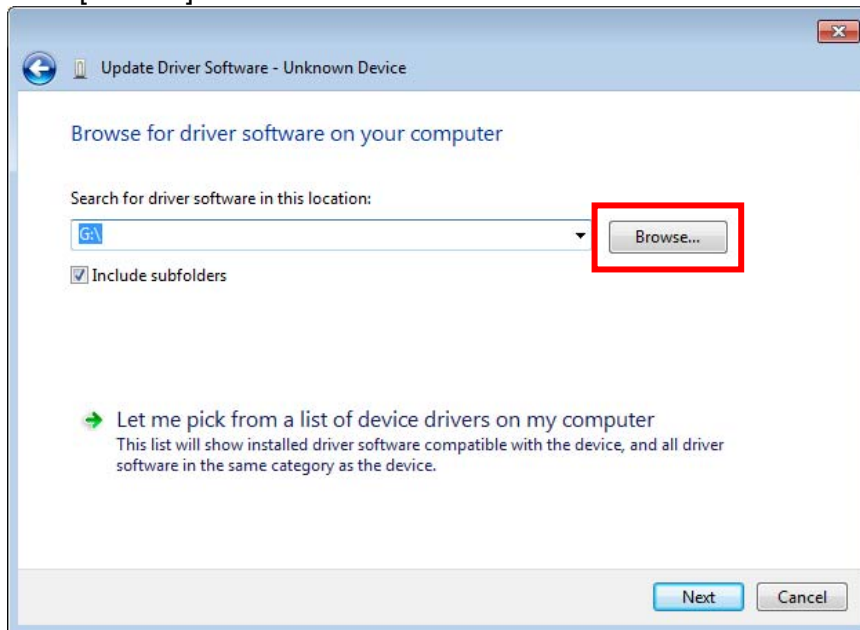


5. Select [Browse my computer for driver software].



## DWT-P01 Updater Operating Instructions

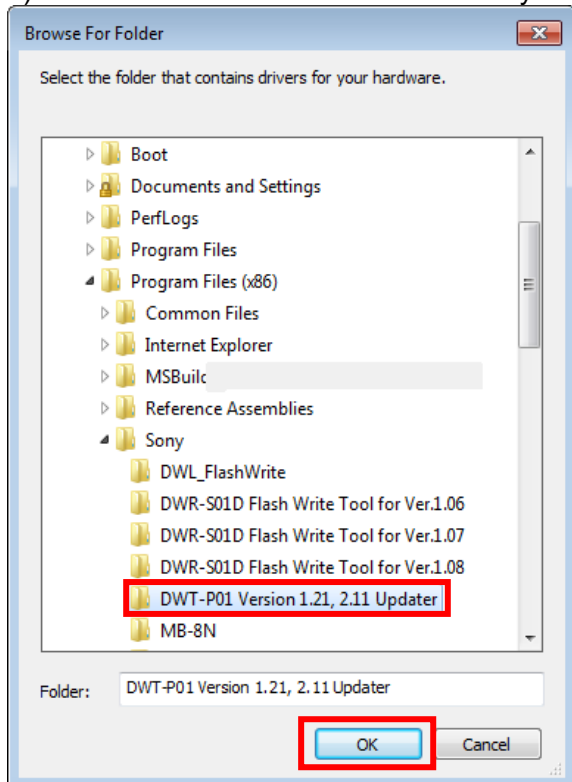
### 6. Click [Browse].



### 7. Select "Computer\C:\Program Files<sup>1)</sup>\Sony\DWT-P01 Version 1.31, 2.21 Updater<sup>2)</sup>," and click [OK].

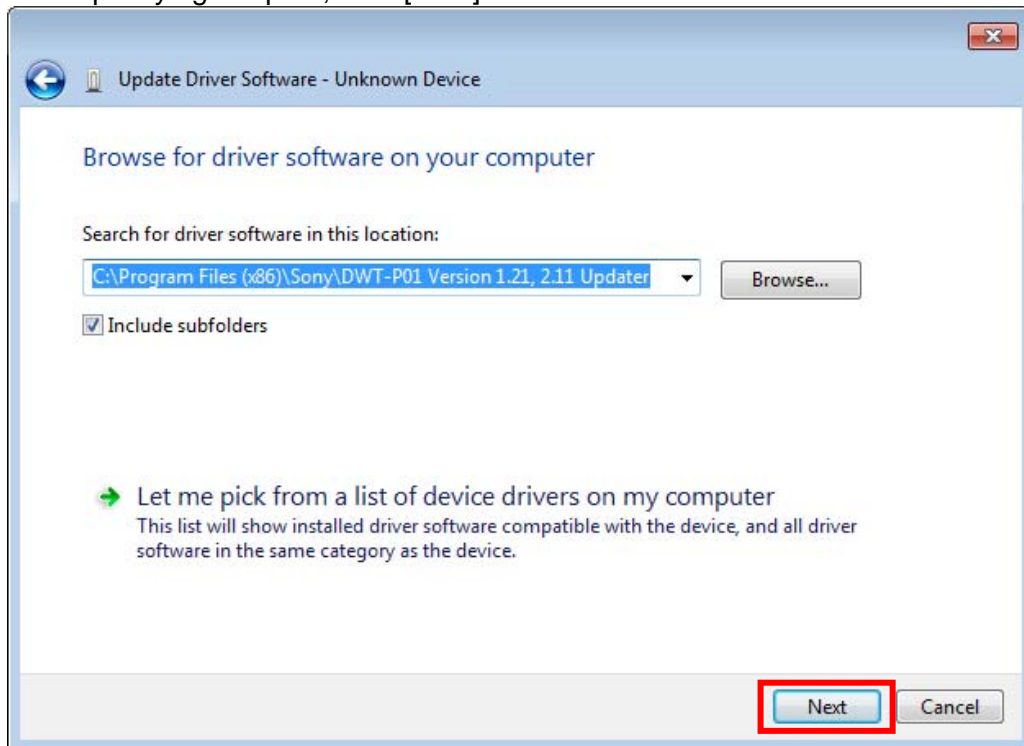
1) In 64-bit operating systems, select "Program Files (x86)."

2) The model name and version will vary depending on the updater.

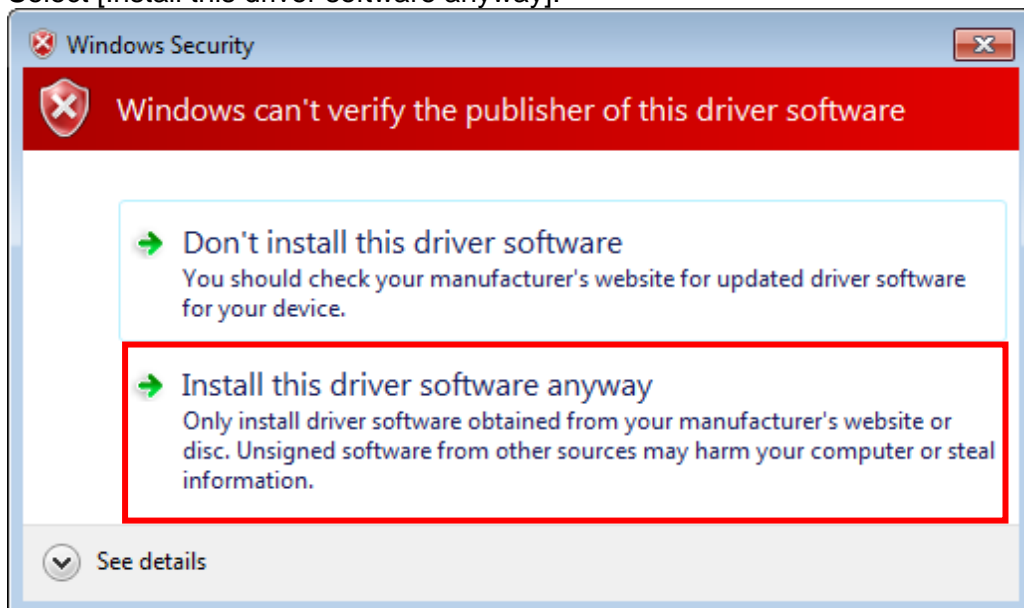


## DWT-P01 Updater Operating Instructions

8. After specifying the path, click [Next].

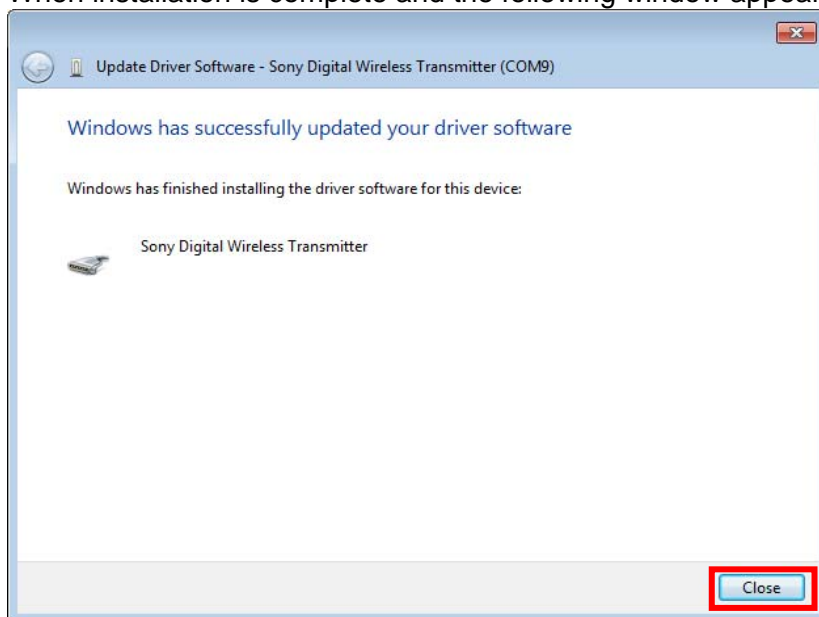


9. Select [Install this driver software anyway].

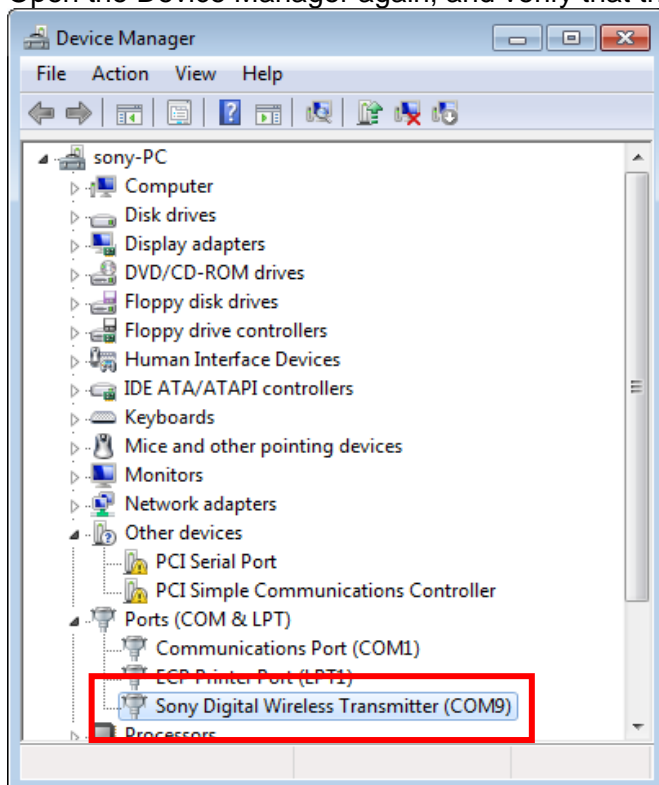


## DWT-P01 Updater Operating Instructions

10. When installation is complete and the following window appears, click [Close].



11. Open the Device Manager again, and verify that the USB driver is installed.





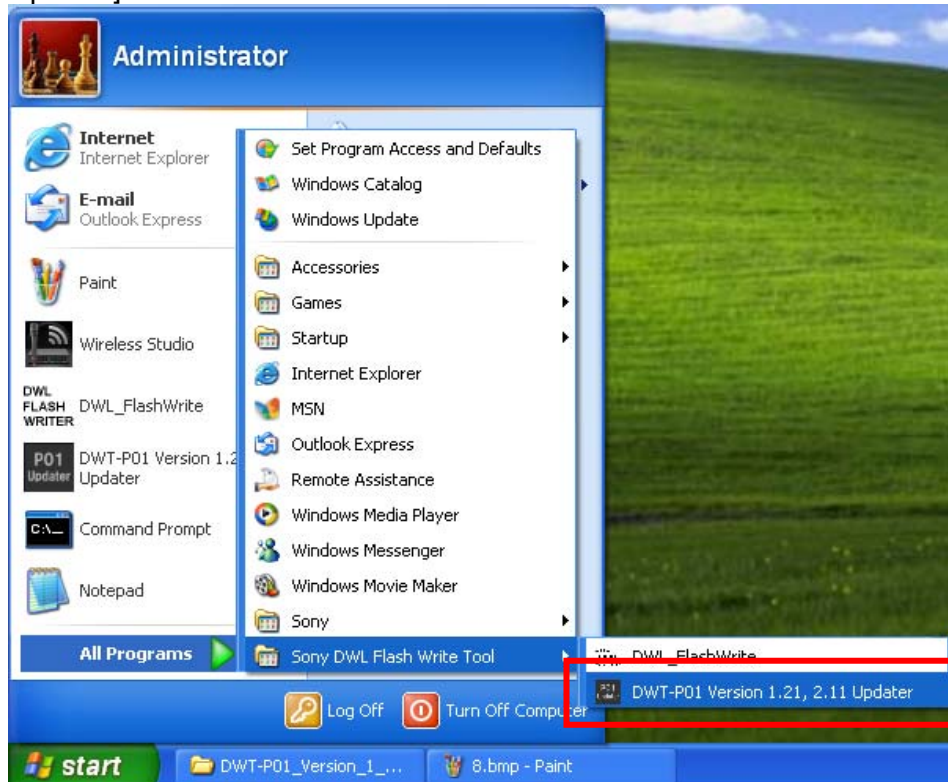
### [Update Procedure]

The procedure for updating the firmware on the DWT-P01 to version 1.31 or 2.21 using DWT-P01 Version 1.31, 2.21 Updater follows.

The screens used are from DWT-P01 Version 1.21, 2.11 Updater.

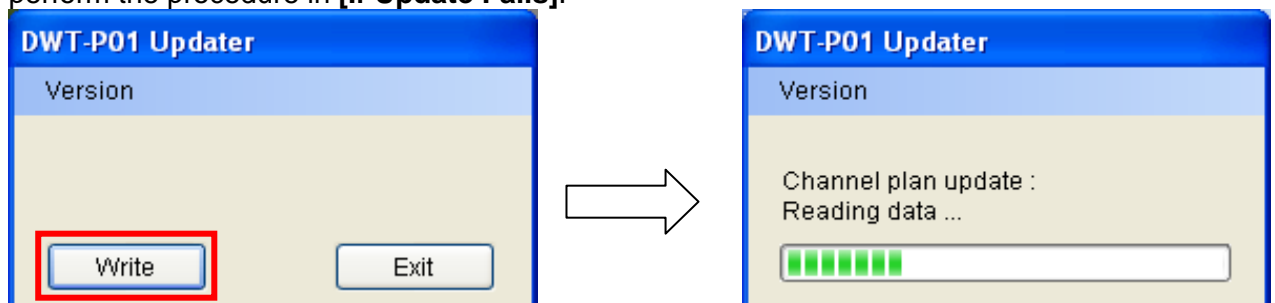
- 1 Start DWT-P01 Version 1.31, 2.21 Updater.

Click [start] > [All Programs] > [Sony DWL Flash Write Tool] > [DWT-P01 Version 1.31, 2.21 Updater].



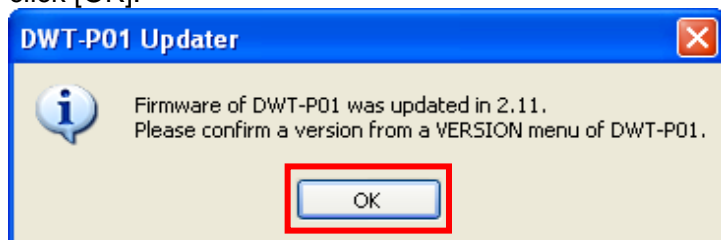
- 2 Click [Write] to start the update.

[Note] If you turn off the DWT-P01 or disconnect the USB cable connecting the DWT-P01 to the computer while update is in progress, the update will fail. To prevent loss of battery power during update, check the remaining battery power before performing update. In the event that update fails, perform the procedure in **[If Update Fails]**.

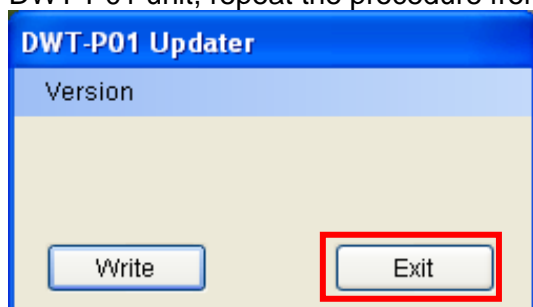


## DWT-P01 Updater Operating Instructions

- 3 When the update is complete and a message indicating that the update was successful appears, click [OK].



- 4 Click [Exit] to quit DWT-P01 Version 1.31, 2.21 Updater. If you want to continue to update another DWT-P01 unit, repeat the procedure from step 2.



### [If Downgrade]

- **Downgrade from Ver. 1.30 and more to Ver. 1.21 and less, downgrade from Ver. 2.20 and more to Ver. 2.11 and less**

When you downgrade the software on DWT-P01 from Ver. 1.20 and more to Ver. 1.21 and less or from Ver. 2.20 and more to Ver. 2.11 and less, be sure to go back up in a factory shipment state. When you do not this procedure, indication of GP/CH may be confused. A procedure that goes back up in a factory shipment state is as follows.

1. Turn on the DWT-P01 while pushing SET button.
2. Press the minus button to display the FACTORY PRESET menu.
3. Continue pushing the SET button more than two seconds.
4. Select "YES" if displayed with "Are you sure?" .

- **Procedure for restoring**

When indication of GP/CH is confused by not going back up in a factory shipment state, please perform the following procedure for restoring.

1. Prepare DWT-P01 Version 1.30 (and more) / 2.20 (and more) Updater
2. Using updater prepared in 1., update DWT-P01.
3. Go back up in a factory shipment state, if update is completed.
4. Prepare DWT-P01 Version 1.21 (and less) / 2.11 (and less) Updater.
5. Using updater prepared in 4., update DWT-P01.

- **If you downgrade DWT-P01 applied a custom setting to Ver. 1.30 and less or Ver. 2.20 and less**

if you downgrade DWT-P01 applied a custom setting to Ver. 1.30 and less or Ver. 2.20 and less, you must erase the custom setting. When you do not this procedure, indication of GP/CH may be confused. A procedure that erases the custom setting is as follows.

## DWT-P01 Updater Operating Instructions

1. Connect the computer to the DWT-P01 using a USB cable.
2. Start DWX Custom Setting Tool, and click [Search] button.
3. If DWX Custom Setting Tool detects the DWT-P01 that is connected the computer, click [Erase] button.

- **Procedure for restoring**

When you downgrade DWT-P01 without erasing a custom setting, indication of GP/CH is confused. Please perform the following procedure for restoring.

1. Prepare DWT-P01 Version 1.31 (and more) / 2.21 (and more) Updater.
2. Using updater prepared in 1., update DWT-P01
3. Start DWX Custom Setting Tool, and click [Search] button, if update is completed.
4. If DWX Custom Setting Tool detects the DWT-P01 that is connected the computer, click [Erase] button.
5. Prepare DWT-P01 Version 1.30 (and less) / 2.20 (and less) Updater.
6. Using updater prepared in 5., update DWT-P01.

### [Verifying Update]

The procedure for verifying the firmware version of the DWT-P01 follows.

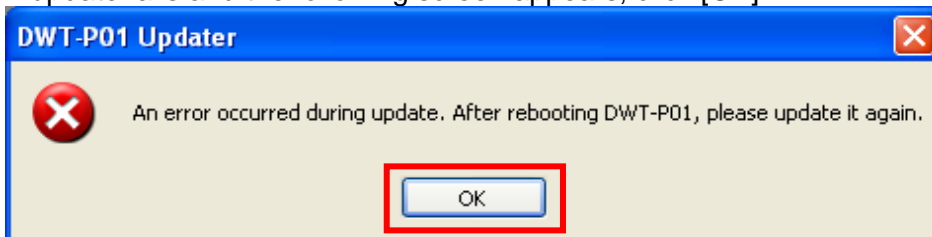
1. Turn on the DWT-P01.
2. Press the minus button to display the VERSION menu.
3. Verify that 1.31 or 2.21 appears for the VERSION item.  
(If you used a different version of DWT-P01 Updater, verify that that version appears.)

### [If Update Fails]

The procedure for restoring an update failure follows.

The screens used are from DWT-P01 Version 1.21, 2.11 Updater.

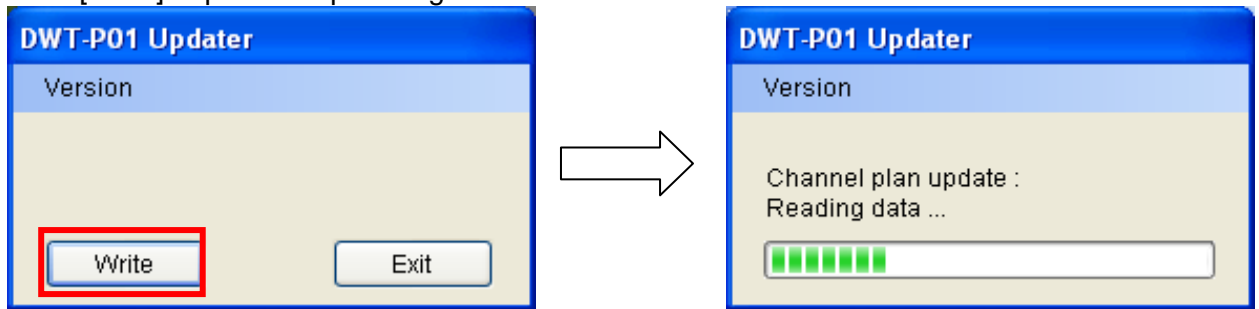
1. If update fails and the following screen appears, click [OK].



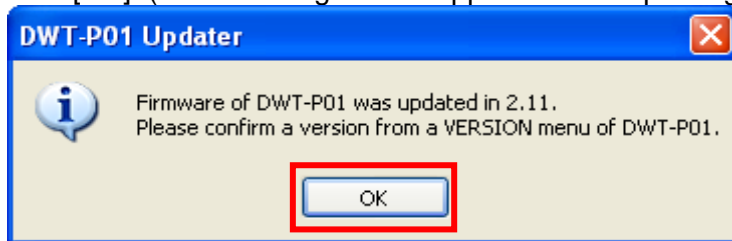
2. Turn off the DWT-P01, then turn it on again.  
(When you restart the DWT-P01 after an update fails, the DWT-P01 unit's screen will be blank, but this is not a malfunction.)

## DWT-P01 Updater Operating Instructions

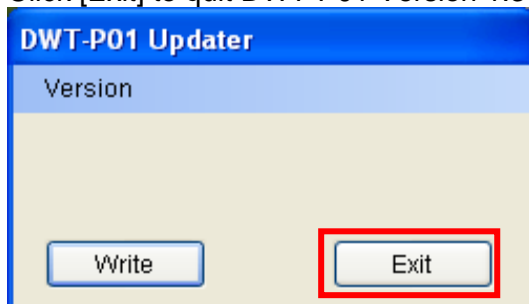
- Click [Write] to perform update again.



- When the update is complete and a message indicating that the update was successful appears, click [OK]. (The following screen appears when updating to version 2.21)



- Click [Exit] to quit DWT-P01 Version 1.31, 2.21 Updater.

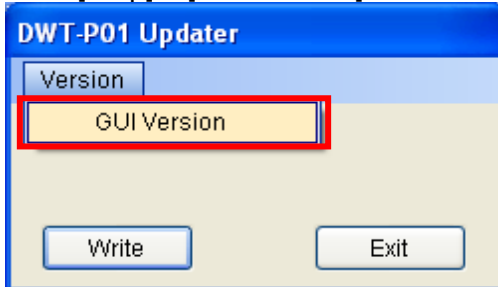


**[Miscellaneous]**

The procedure for verifying the version of DWT-P01 Updater follows.

The screens used are from DWT-P01 Version 1.21, 2.11 Updater.

1. Click [Help] > [GUI Version].



2. The version of this software appears.

